

Series 422CSF-8 Check Valve

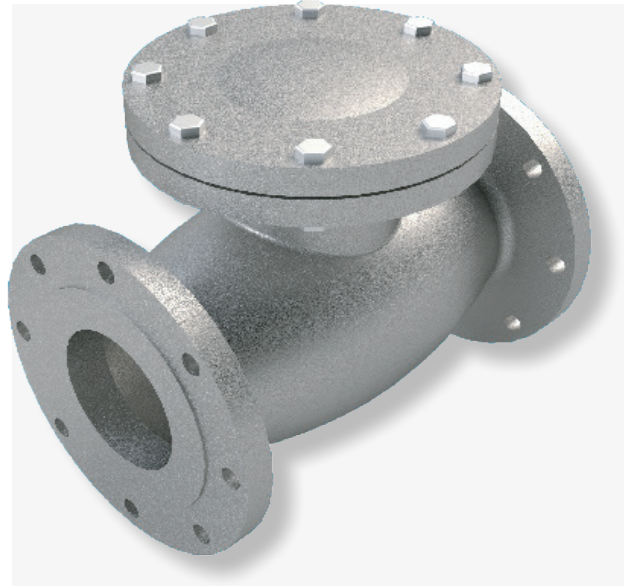
Sizes 2" ~ 12"

Trim 8



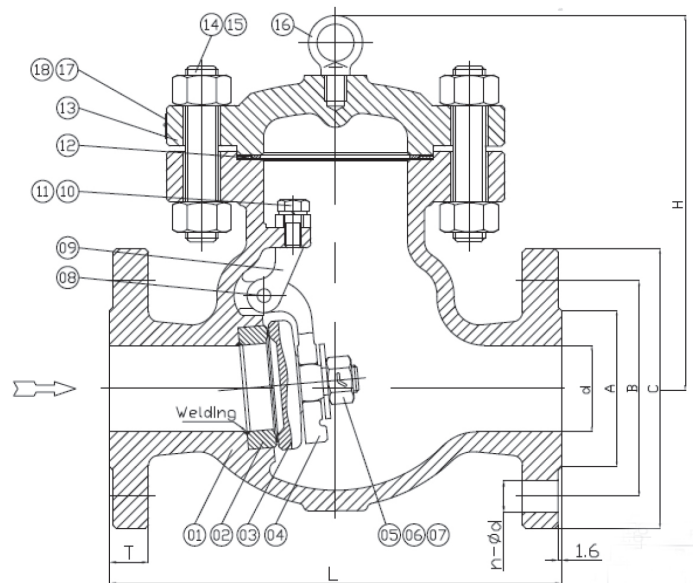
SERIES 422CSF DESIGN FEATURES

- ✓ Cast Steel ASTM A216-WCB
- ✓ Class 150# Flanged Ends
- ✓ Maximum Pressure 285 psi
- ✓ Maximum Temperature 1000F
- ✓ Bolted Cover
- ✓ API 600 compliant
- ✓ Standard NACE MRO175
- ✓ Trim 8



MATERIALS OF CONSTRUCTION

No.	Part	Material Stainless
1	Body	ASTM A216-WCB
2	Seat	ASTM A105+STL
3	Disc	ASTM A216-WCB+13Cr
4	Hinge	ASTM A216-WCB
5	Nut	ASTM A194 2H
6	Gasket	ASTM A276-410
7	Split Pin	SS
8	Pin	ASTM A276-410
9	Fixed Hinge	ASTM A216-WCB
10	Stud	ASTM A193-B7
11	Washer	ASTM A36
12	Gasket	304+Flexible Graphite
13	Cover	ASTM A216-WCB
14	Stud	ASTM A193-B7
15	Nut	ASTM A194-2H
16	Eyebolt	ASTM A29-1025
17	Rivet	SS
18	Name Plate	SS



PART NUMBER & DIMENSIONS									
Part Number	Size	d	A	B	C	T	L	H	n-Ød
422CSF08-8	2"	2.01	3.62	4.75	5.99	0.63	8.00	5.32	4-3/4
422CSF09-8	2-1/2"	2.52	4.14	5.50	7.01	0.69	8.51	6.11	4-3/4
422CSF10-8	3"	2.99	5.00	6.01	7.49	0.75	9.50	6.62	8-3/4
422CSF11-8	4"	4.02	6.19	7.51	9.02	0.95	11.50	9.26	8-3/4
422CSF13-8	6"	5.99	8.51	9.52	10.99	1.02	14.03	10.91	8-7/8
422CSF14-8	8"	8.00	10.64	11.76	13.51	1.14	19.50	13.36	8-7/8
422CSF15-8	10"	10.01	12.77	14.26	16.00	1.22	24.51	15.68	12-1
422CSF16-8	12"	12.02	15.01	17.02	19.03	1.26	27.50	20.69	12-1

*What do you need today?*TM

