

*AT FULL DIFFERENTIAL PRESSURE FOR CLEAN FLUIDS WITH DELRIN SEATS

SIZE	A	øB	C	øD	E	F	G	H (SQ.)	J1	J2	øK	L	øM	NPT THREAD	SAE THREAD	ISO 5211	WEIGHT (lbs)	Cv	TORQUE* (in-lbf)
1/2"	0.36 (9)	0.80 (20)	0.59 (15)	0.50 (13)	3.99 (101)	5.0 (129)	2.2 (57)	1.4 (35)	0.22 (5)	0.36 (9)	M5 X 0.8P	1.42 (36)	0.86 (22)	1/2" - 14NPT	SAE 8	F03	2	10	150
3/4"	0.51 (13)	0.90 (23)	0.83 (21)	0.75 (20)	4.25 (108)	6.3 (150)	2.7 (71)	1.6 (41)	0.30 (8)	0.43 (11)	M5 X 0.8P	1.65 (42)	1.06 (27)	3/4" - 14NPT	N/A	F04	4	32	200
1"	0.51 (13)	1.10 (28)	0.87 (22)	1.00 (25)	4.50 (114)	8.25 (205)	3.5 (82)	1.6 (41)	0.34 (9)	0.54 (14)	M5 X 0.8P	1.65 (42)	1.34 (34)	1" - 11.5NPT	SAE 16	F04	5	57	320
1-1/2"	0.63 (16)	1.30 (33)	1.06 (27)	1.50 (38)	5.25 (133)	10.2 (260)	4.5 (105)	1.9 (48)	0.39 (10)	0.61 (15)	M6 X 1.0P	1.97 (50)	1.92 (49)	1-1/2" - 11.5NPT	N/A	F05	11	104	575
2"	0.63 (16)	1.30 (33)	1.06 (27)	2.00 (51)	6.64 (169)	10.2 (260)	4.8 (114)	1.9 (48)	0.39 (10)	0.61 (15)	M6 X 1.0P	1.97 (50)	2.40 (61)	2" - 11.5NPT	N/A	F05	17	240	1000

PRODUCT INFORMATION:


1. END CONNECTIONS AVAILABLE IN: SCREWED (FNPT), SOCKET WELD AND SCREWED ENDS PER SAE SPECIFICATION J1926 (SIZES 1/2" & 1" VALVES)
2. FLOATING BALL
3. BALL IS VENTED ON THE STEM SLOT AREA
4. BLOW-OUT PROOF STEM
5. 1/2" - 2" FULL PORT
6. STANDARD LOCKING HANDLE
7. SEAL WELDED CONSTRUCTION
8. SEAT MATERIALS:
 - 7.1. DELRIN SEATS/PTEF BODY SEALS STANDARD WITH SE (SCREWED END) ENDS
 - 7.2. PEEK SEATS/GRAFOIL BODY SEALS STANDARD WITH SW (SOCKET WELD) ENDS
9. ANTI-STATIC DEVICE
10. COMPLETE VALVE AUTOMATION

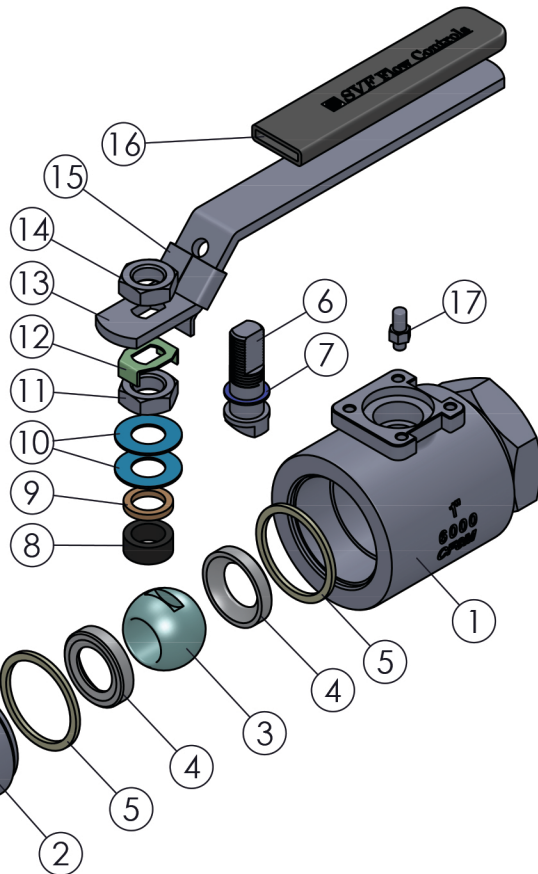
APPLICABLE STANDARDS:

1. NCAE MR 0175
2. ISO 5211: MOUNTING
3. API 607: FIRE SAFE
4. API 598: INSPECTION AND TESTING
5. ANSI B1.20.1: NPT
6. ASME B16.11: FORGED STEEL FITTINGS, SOCKET-WELDING

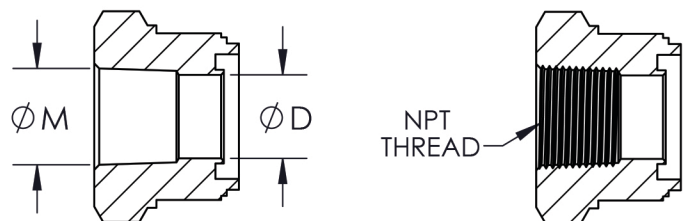
ITEM NO.	DESCRIPTION	MATERIALS	QTY.
1	BODY	A351-CF8M	1
2	END	A351-CF8M	1
3	BALL	A351-CF8M	1
4	SEAT	DELRIN PEEK	2
5	BODY SEAL	PTFE GRAFOIL	2
6	STEM	A564-630	1
7	STEM THRUST WASHER	PEEK	1
8	STEM SEAL	GRAFOIL	1
9	GLAND FOLLOWER	304 STAINLESS STEEL	1
10	BELLEVILLE WASHER	301 STAINLESS STEEL	2
11	JAM NUT	304 STAINLESS STEEL	1
12	LOCK TAB	304 STAINLESS STEEL	1
13	LEVER HANDLE	304 STAINLESS STEEL	1
14	HANDLE NUT	304 STAINLESS STEEL	1
15	LOCKING DEVICE	304 STAINLESS STEEL	1
16	HANDLE SLEEVE	PVC	1
17	STOP PIN	304 STAINLESS STEEL	1

DRAWN BY E.P.	DATE 06/09/2017
CHECKED BY E.G.	DATE 01/30/2019
APPROVED BY J.S. <small>(FOR REF ONLY IF NOT PROVIDED)</small>	DATE 01/30/2019
<small>THE INFORMATION CONTAINED IN THIS DRAWING IS THE SOLE PROPERTY OF OSVF FLOW CONTROLS, INC. ANY REPRODUCTION IN PART OR IN WHOLE WITHOUT THE WRITTEN CONSENT OF OSVF FLOW CONTROLS, INC. IS PROHIBITED.</small>	

	DESCRIPTION:
	1/2" - 2" HBEV 2-PIECE HIGH PRESSURE AND FIRE SAFE BALL VALVE
UNITS: INCH (MILLIMETERS)	DATE: 01/30/2019
	REV: D

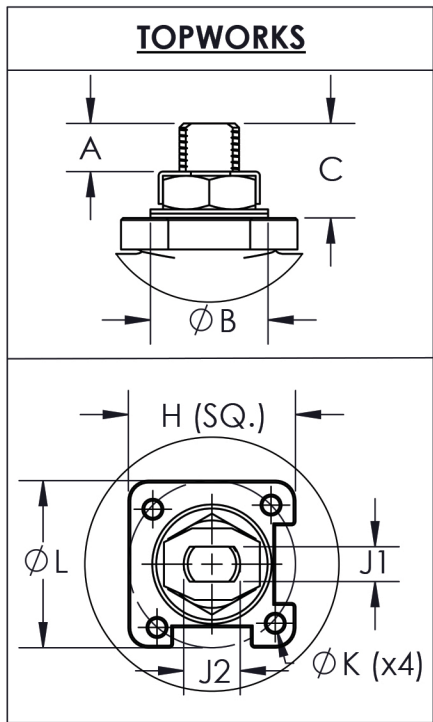
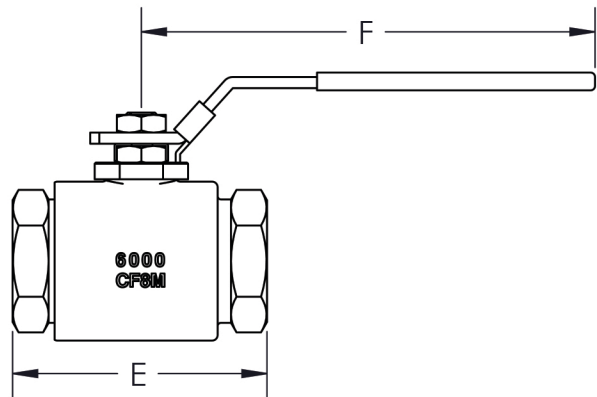
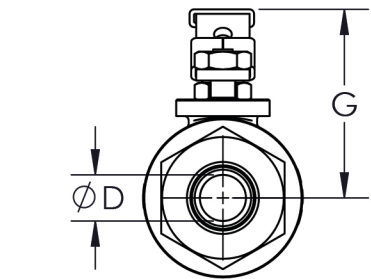


END CONFIGURATIONS:



SOCKET WELD END

SCREWED END



A

B

C

D

E

F

G