

Series 432CSF-8 Check Valve

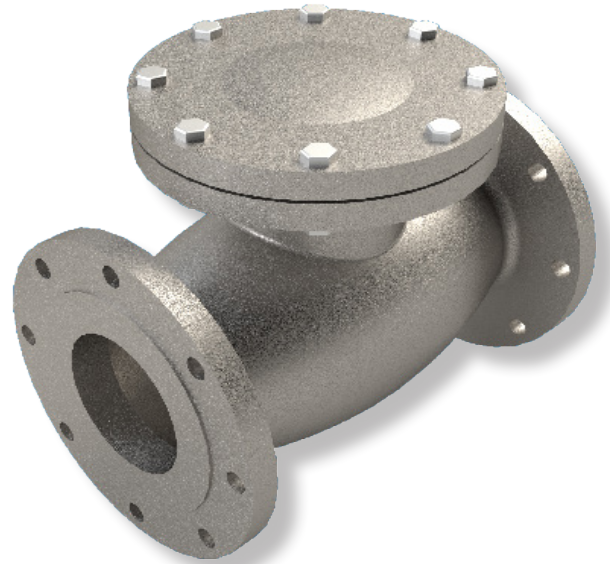
Sizes 2" ~ 12"

Trim 8



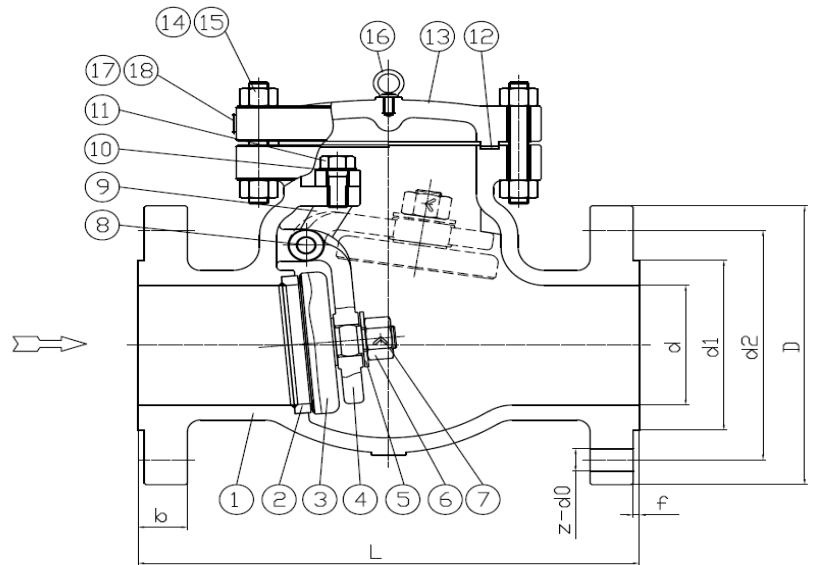
SERIES 432CSF DESIGN FEATURES

- ✓ Cast Steel ASTM A216-WCB
- ✓ Class 300# Flanged Ends
- ✓ Maximum Pressure 285 psi
- ✓ Maximum Temperature 1000F
- ✓ Bolted Cover
- ✓ API 600 compliant
- ✓ Standard NACE MRO175
- ✓ Trim 8



MATERIALS OF CONSTRUCTION

No.	Part	Material
1	Body	ASTM A216-WCB
2	Seat	ASTM A105+STL
3	Disc	ASTM A105+13Cr
4	Hinge	ASTM A216-WCB
5	Gasket	SS
6	Nut	ASTM A194 2HM
7	Split Pin	SS
8	Pin	ASTM A276-410
9	Fixed Hinge	ASTM A216-WCB
10	Washer	ASTM A36
11	Stud	ASTM A193 B7M
12	Gasket	304+Flexible Graphite
13	Cover	ASTM A216-WCB
14	Stud	ASTM A193-B7M
15	Nut	ASTM A194-2HM
16	Eyebolt	ASTM A29-1025
17	Rivet	SS
18	Name Plate	SS



PART NUMBER & DIMENSIONS									
Part Number	Size	d	L	D	d1	d2	b	f	z-Ød
432CSF08-8	2"	1.90	10.50	6.5	3.62	5.0	0.9	0.08	8-3/4
432CSF09-8	2-1/2"	2.44	11.50	7.5	4.13	5.9	1.0	0.08	8-7/8
432CSF10-8	3"	2.91	12.50	8.3	5.00	6.6	1.1	0.08	8-7/8
432CSF11-8	4"	3.94	14.00	10.0	6.19	7.9	1.3	0.08	8-7/8
432CSF13-8	6"	5.91	17.50	12.6	8.50	10.7	1.5	0.08	12-7/8
432CSF14-8	8"	7.91	21.00	15.0	10.63	13.0	1.6	0.08	12-1
432CSF15-8	10"	9.92	24.50	17.5	12.75	15.3	1.9	0.08	16-1-1/8
432CSF16-8	12"	11.93	28.00	20.5	15.00	17.7	2.0	0.08	16-1-1/4

