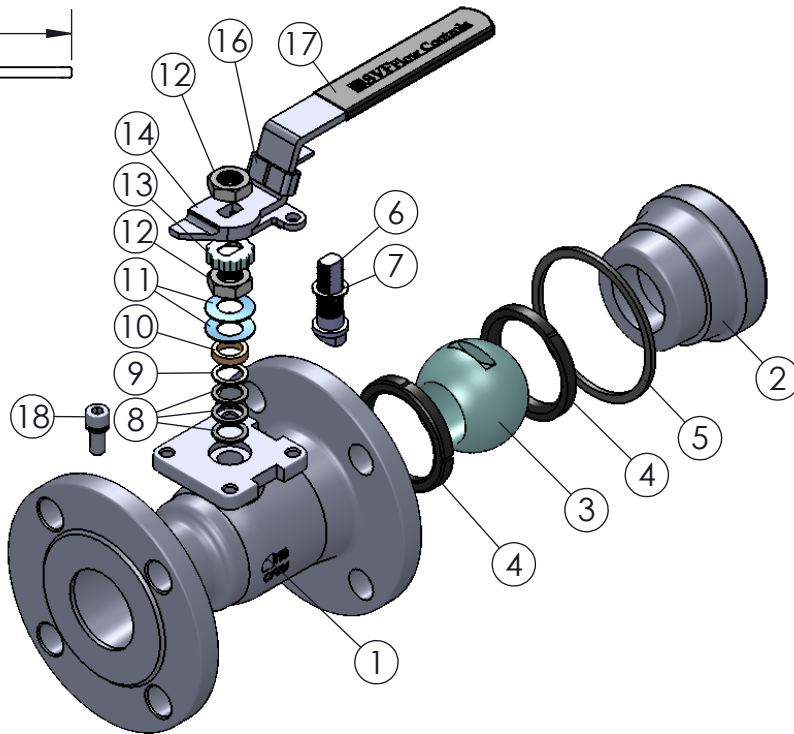
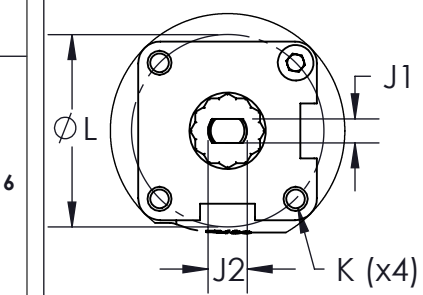
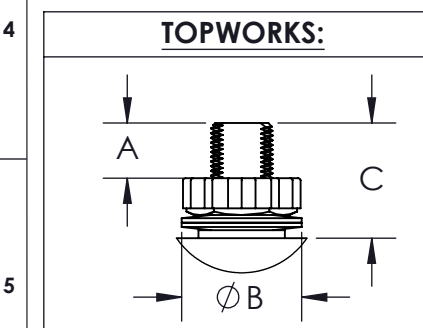
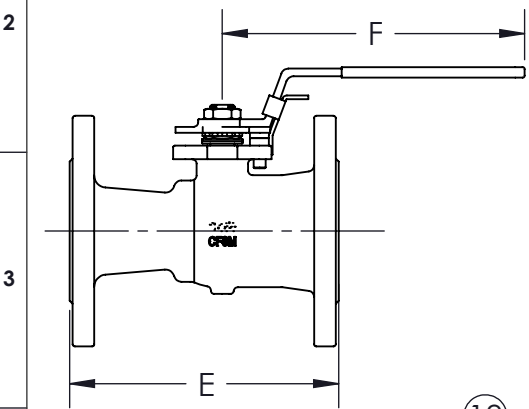
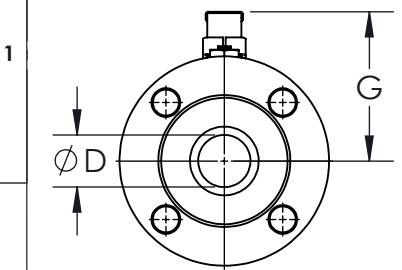
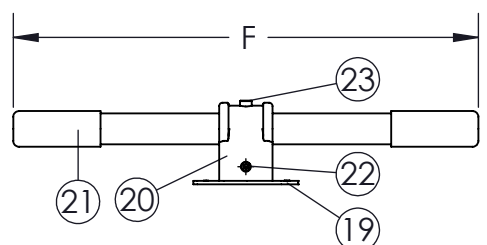


*AT FULL DIFFERENTIAL PRESSURE

SIZE	A	øB	C	øD	E	F	G	J1	J2	K	øL	ISO 5211	WEIGHT (lbs)	Cv	TORQUE* (in-lbf) TFM1600	TORQUE* (in-lbf) SUPRALON
1-1/2"	0.65 (16)	1.24 (31)	1.26 (32)	1.26 (32)	6.50 (165)	7.87 (200)	4.13 (105)	0.38 (10)	0.62 (15)	M8-1.25	2.76 (70)	F07	10	130	218	312
2"	0.65 (16)	1.24 (31)	1.26 (32)	1.50 (38)	7.00 (178)	7.87 (200)	4.49 (114)	0.38 (10)	0.62 (15)	M8-1.25	2.76 (70)	F07	15	200	315	450
3"	0.87 (22)	1.78 (45)	1.67 (42)	2.37 (60)	8.00 (203)	11.81 (300)	5.59 (142)	0.63 (16)	0.87 (22)	M10-1.5	4.02 (102)	F10	31	450	696	995
4"	1.14 (29)	2.26 (57)	2.17 (55)	2.99 (76)	9.00 (229)	15.75 (400)	7.66 (195)	0.71 (18)	1.12 (28)	M10-1.5	4.02 (102)	F10	48	600	1136	1623
6"	0.90 (23)	2.74 (69)	2.44 (62)	3.94 (100)	10.50 (267)	15.75 (400)	9.50 (241)	1.06 (27)	1.06 (27)	M10-1.5	4.02 (102)	F10	100	1100	1972	2818



SIZES 3" - 6" WITH PIPE HANDLE:



PRODUCT INFORMATION:
 1. LIVE-LOADED STEM PACKING
 2. STANDARD LOCKING HANDLE
 3. ANTI-STATIC DEVICE
 4. COMPLETE VALVE AUTOMATION

OPTIONS:
 1. ISO STEM EXTENSION
 2. STEAM JACKET

APPLICABLE STANDARDS:
 1. NACE MR 0175
 2. ASME B16.34: DESIGN AND WALL THICKNESS
 3. ASME B16.10: FACE TO FACE
 4. ASME B16.5: END FLANGE
 5. API 598: INSPECTION AND TESTING
 6. API 607: FIRE SAFE
 7. ISO 5211: MOUNTING
 8. USP CLASS VI: CONFIRMATION OF COMPLIANCE (TFM1600/PTFE MATERIAL)

ITEM NO.	DESCRIPTION	MATERIALS	QTY.
1	BODY	A351-CF8M A216-WCB	1
2	END CAP	A351-CF8M A216-WCB	1
3	BALL	A351-CF8M	1
4	SEAT	TFM1600 SUPRALON	2
5	BODY SEAL	GRAFOIL PTFE	1
6	STEM	A276-316	1
7	STEM THRUST WASHER	SUPRALON TFM1600	1
8	STEM SEAL	GRAFOIL PTFE	3
9	BUSHING	304 STAINLESS STEEL	1
10	GLAND FOLLOWER	316 STAINLESS STEEL	1
11	BELLEVILLE WASHER	301 STAINLESS STEEL	2
12	STEM NUT	304 STAINLESS STEEL	1
13	TAB LOCK	304 STAINLESS STEEL	1
14	HANDLE (SIZES 1-1/2" - 2")	A351-CF8M	1
15	HANDLE NUT	304 STAINLESS STEEL	1
16	LOCKING DEVICE (SIZES 1-1/2" - 2")	304 STAINLESS STEEL	1
17	HANDLE SLEEVE	PVC	1
18	STOP PIN	A193-B8	1
19	TRIANGULAR STOPPER (SIZES 3" - 6")	304 STAINLESS STEEL	1
20	PIPE HANDLE ADAPTER (SIZES 3" - 6")	A351-CF8M	1
21	PIPE HANDLE (SIZES 3" - 6")	304 STAINLESS STEEL	1
22	PIPE HANDLE SET SCREW (SIZES 3" - 6")	A193-B8	1
23	ADAPTER SET SCREW (SIZES 3" - 6")	A193-B8	1

DRAWN BY E.P. DATE 06/28/2017
 CHECKED BY E.G. DATE 06/29/2017
 APPROVED BY J.S. DATE 06/29/2017
(FOR REF ONLY IF NOT APPROVED)



PROJECTION THIRD ANGLE

DESCRIPTION: 1-1/2" - 6" 41C FLANGED BALL VALVE, ANSI CLASS 150, STANDARD PORT

UNITS: INCH (MILLIMETERS) DATE: 06/28/2017 REV: A