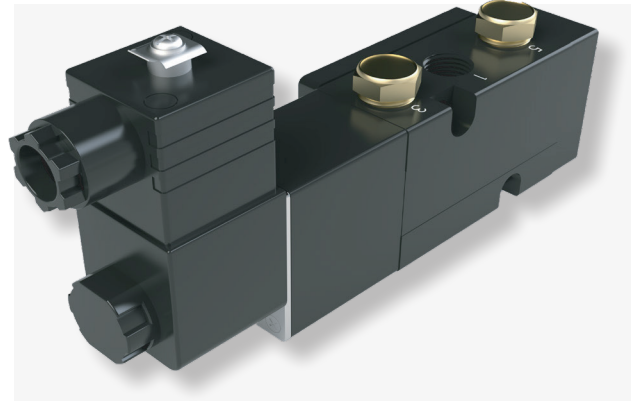


The VECTOR-PV9 Series Intrinsically Safe IP65 pilot valves ATEX approved, direct mount (NAMUR VDI/VDE 3845) valves used to pilot pneumatic actuators. The valve is a universal type (5/2 convertible to 3/2) and can be used on double acting or spring return actuators. Pilot Valves can be used with air, nitrogen or natural gas.

## VECTOR PV9 DESIGN FEATURES

- ✓ Low Power (24VDC, <1W) for Intrinsically Safe
- ✓ May be used as a 3-way or 4-way pilot valve for spring return and double acting actuators respectively
- ✓ NAMUR mounting interface
- ✓ Rated to IP65
- ✓ Class "F" coil standard. Coil insulation rating is -14 ~ 122 °F (-10 ° ~ 50 °C)
- ✓ Easily field retrofitted for Spring Return and Double Acting applications



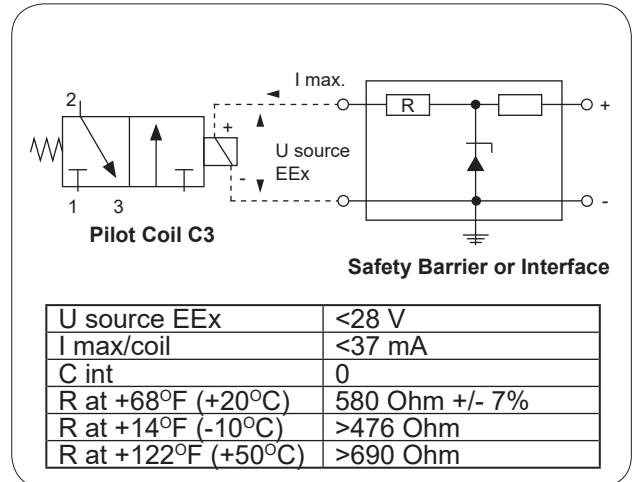
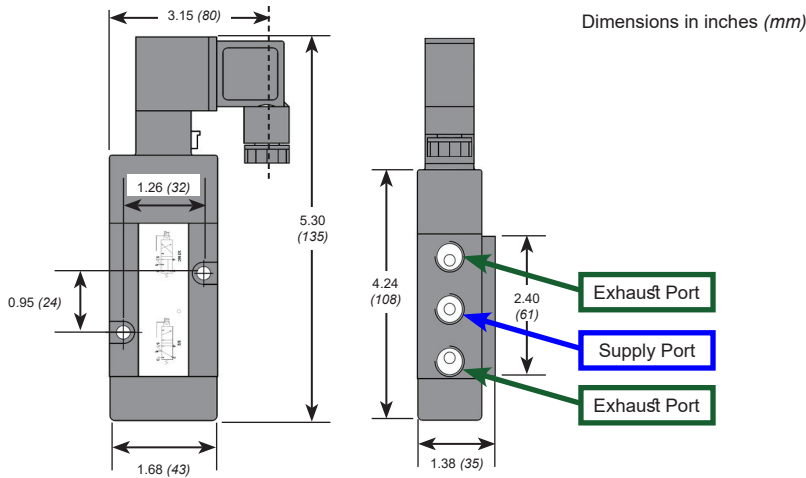
## GENERAL SPECIFICATIONS

Area Classification	Exia IIC T6*	
Type	5/2, 3/2	
Air Pressure	Operating: 40 psi to 120 psi	Maximum Design Pressure: (175 psi) intermittent
Temperature	-13 °F to 176 °F (-25 °C to 80 °C)	
Voltages	24VDC	<p>*About Area Classification (Exia IIC T6):</p> <p>ia: This offers the highest level of protection and is generally considered as being adequately safe for use in the most hazardous locations (Zone 0) because the probability of two 'faults' and a safety factor of 1.5 is considered in the assessment of safety.</p> <p>IIC: Hydrogen Gas Environment</p> <p>T6: Maximum Surface Temperature: 85 °C (185 °F)</p>
Power Consumption	<1W	
Air Connections	1/4" NPT	
Air Flow (Cv)	1.1	
Insulation Protection	Class "F" Coil	
Assembly and Connection	24mm X 32mm NAMUR Mount	
Spool Valve/Body	Extruded aluminum	
Coating	Anodized	
Electrical Entry	PG9 Conduit Connector	
Rating/Enclosure	IP65	
Weight	1.0 lbs.	

## HOW TO ORDER GUIDE

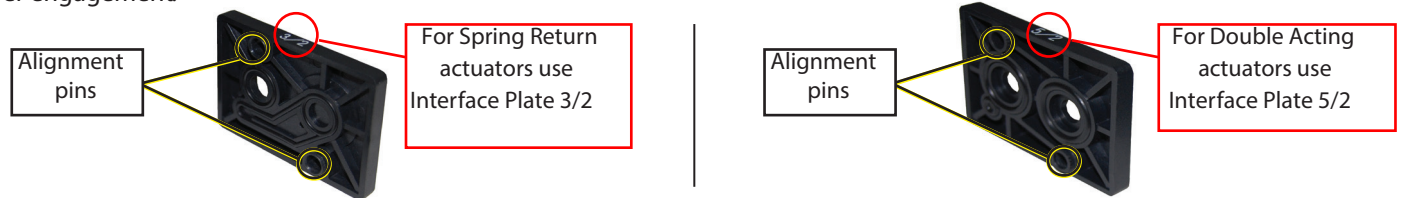
SERIES	VOLTAGE
VECTOR-PV9 = NAMUR Mount 3/2 NC and 5/2 Functions For Single Acting and Double Acting Pneumatic Actuators, CE, IP65, 24VDC	24 VDC <1W
<p>Example Description: VECTOR-PV9, NAMUR Mount Pilot Valve, Intrinsically Safe with 24VDC Coil. Order Example: (VECTORPV924VDC)</p>	

## PILOT VALVE DIMENSIONS

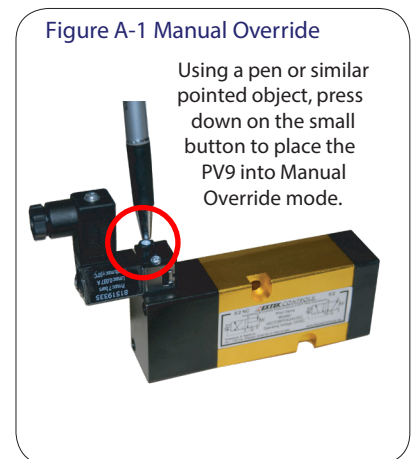
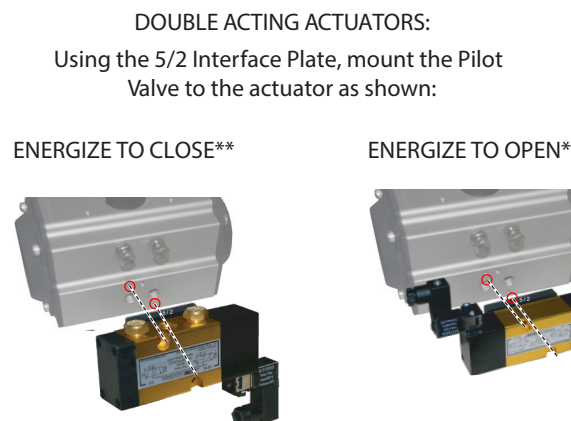
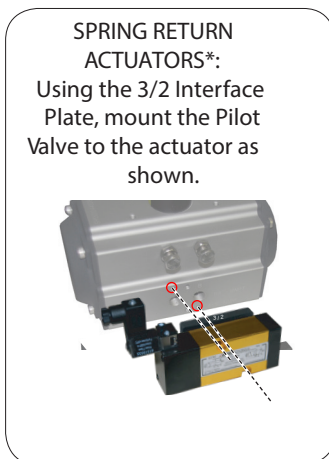


## PILOT VALVE MOUNTING INSTRUCTIONS

The mounting kit includes 2 interface plates that will direct the supply air to the correct manifold ports for either double acting (5/2) or Spring return (3/2) actuators. Each interface plate has a set of alignment pins to ensure proper engagement.



Always note the orientation of the Pilot Valve body and supply air porting when following these instructions.



\* Supply air porting is on the bottom of the VECTOR

\*\* Supply air porting is on the top of the VECTOR

**MANUAL OVERRIDE** : Use of the manual override will by-pass automatic operation. This function is helpful in the event that the valve must be cycled when electrical supply is unavailable. Press down on the button with a pen or similar pointed object to place the unit in Manual Override. Refer to Figure A-1 above.

NOTE: For detailed instructions on the VECTOR-PV Series, please refer to the IOM.