

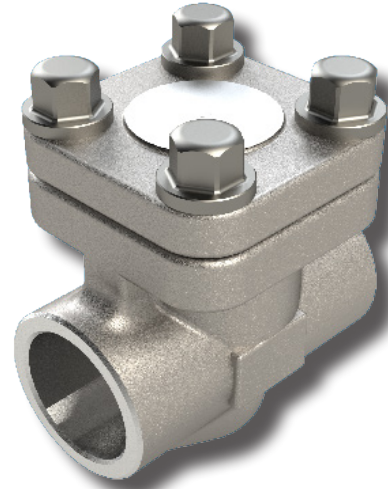
# Series 522F Check Valve

Sizes 1/4" ~ 2"



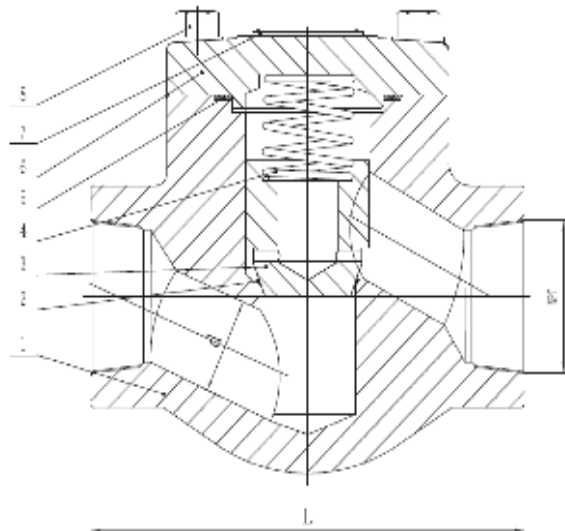
## SERIES 522F DESIGN FEATURES

- ✓ Forged Carbon or Stainless Steel
- ✓ Class 800
- ✓ Maximum Pressure 1975 psi
- ✓ Maximum Temperature 850°F
- ✓ Bolted bonnet
- ✓ API 602 compliant
- ✓ Standard NACE MRO175



## MATERIALS OF CONSTRUCTION

No.	Part	Material Stainless
1	Body	F316L
2	Seat	INT
3	Disc	F316L
4	Gasket	F316L
5	Cover	SS16 Flexible Graphite
6	Name Plate	AL
7	Spring	SS316
8	Bolt	BB8M



## DIMENSIONS

Size-NPT	L	d
1/4"	3.11	0.24
3/8"	3.11	0.32
1/2"	3.11	0.39
3/4"	3.62	0.51
1"	4.37	0.69
1-1/4"	4.73	0.91
1-1/2"	4.73	1.10
2"	5.52	1.38

## How to order 522F Series Check Valves

Series	Material	Ends	Sizes	
522F	SS-Stainless Steel	T-Threaded	01-1/4"	
			02-3/8"	
		W-Socket Weld	03-1/2"	
			04-3/4"	
				05-1"
				06-1-1/4"
				07-1-1/2"
				08-2"

Sample Part #: 522SST05

