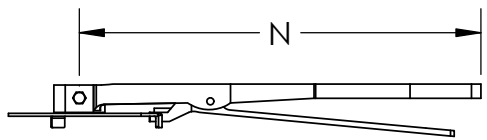


MALLEABLE LEVERS:



SIZE	A	B	C	E-ØF	G1	G2	J1 (SQ.)	ØK	ØL	ØM	N	ISO 5211	WEIGHT (lbs)	Cv	WET TORQUE (in-lbf)
2"	1.18 (30)	4.74 (120)	1.81 (46)	4-5/8"-11	6.38 (162)	2.99 (76)	0.35 (9)	0.43 (11)	2.76 (70)	3.54 (90)	10.35 (263)	F07	9	113	134
2-1/2"	1.18 (30)	5.49 (140)	1.93 (49)	4-5/8"-11	6.89 (175)	3.15 (80)	0.35 (9)	0.43 (11)	2.76 (70)	3.54 (90)	10.35 (263)	F07	10	192	150
3"	1.18 (30)	6.00 (153)	1.93 (49)	4-5/8"-11	7.13 (181)	3.74 (95)	0.35 (9)	0.43 (11)	2.76 (70)	3.54 (90)	10.35 (263)	F07	11	296	206
4"	1.18 (30)	7.50 (190)	2.17 (55)	8-5/8"-11	7.87 (200)	4.49 (114)	0.43 (11)	0.43 (11)	2.76 (70)	3.54 (90)	10.35 (263)	F07	16	588	355
5"	1.18 (30)	8.50 (216)	2.30 (59)	8-3/4"-10	8.39 (213)	5.00 (127)	0.55 (14)	0.43 (11)	2.76 (70)	3.54 (90)	10.35 (263)	F07	21	1001	552
6"	1.18 (30)	9.50 (242)	2.30 (59)	8-3/4"-10	8.86 (225)	5.51 (140)	0.55 (14)	0.43 (11)	2.76 (70)	3.54 (90)	10.35 (263)	F07	24	1548	910
8"	1.42 (36)	11.75 (299)	2.52 (64)	8-3/4"-10	10.24 (260)	6.81 (173)	0.67 (17)	0.51 (13)	4.02 (102)	4.92 (125)	14.02 (356)	F10	39	3075	1695
10"	1.42 (36)	14.25 (362)	2.82 (72)	12-7/8"-9	11.50 (292)	7.99 (203)	0.87 (22)	0.51 (13)	4.02 (102)	4.92 (125)	14.02 (356)	F10	58	5235	2791
12"	1.42 (36)	17.00 (432)	3.19 (81)	12-7/8"-9	13.27 (337)	9.33 (237)	0.87 (22)	0.51 (13)	4.02 (102)	4.92 (125)	14.02 (356)	F10	80	8085	4235

PRODUCT INFORMATION:
 1. SEAT MATERIAL AVAILABLE IN: BUNA, EPDM, VITON
 2. TEN POSITION LEVER HANDLE
 3. GEAR OP AVAILABLE
 4. DESIGNED FOR DEAD END SERVICE
 5. COMPLETE BUTTERFLY VALVE AUTOMATION

APPLICABLE STANDARDS:
 1. API 609: DESIGN CODE/ FACE TO FACE
 2. ISO 5211: MOUNTING
 3. API 598: INSPECTION AND TEST
 4. ANSI 150LB: END STANDARD

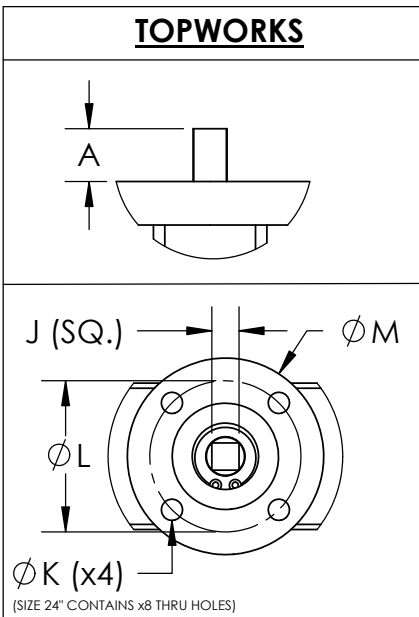
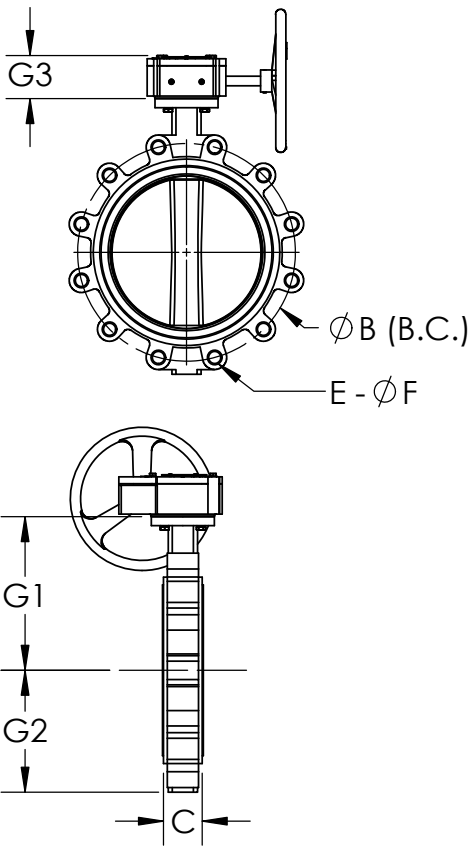
ITEM NO.	DESCRIPTION	MATERIALS	QTY.
1	BODY	A536	1
2	DISC	A351-CF8M	1
3	SEAT	BUNA EPDM VITON	1
4	SHAFT	410 STAINLESS STEEL	1
5	BUSHING	PTFE	4
6	O-RING	BUNA EPDM VITON	1
7	BOLT	304 STAINLESS STEEL	2
8	INDICATOR	GALVANIZED STEEL	1
9	HANDLE LEVER	MALLEABLE IRON	1
10	NUT	304 STAINLESS STEEL	2
11	PIN QTY.: 2"-5": 1, 6"-12": 2	316 STAINLESS STEEL	-
12	FIX SCREW QTY: 2"-3": 2, 4"-8": 4, 10"-12": 6	CARBON STEEL	-
13	SCREW CAP QTY: 2"-3": 2, 4"-8": 4, 10"-12": 6	COMPOSITES	-

DRAWN BY C.L. DATE 03/30/2021
 CHECKED BY K.C. DATE 03/03/2026
 APPROVED BY J.S. DATE 03/03/2026
(FOR REF ONLY IF NOT APPROVED)

OSVF FLOW CONTROLS
 5595 Fresca Drive • La Palma, CA 90623 • 1.800.783.7836
 www.SVF.net • Sales@SVF.net

DESCRIPTION:
 2" - 12" STREAMLINE SLB LUG BUTTERFLY VALVE

UNITS: INCH (MILLIMETERS) DATE: 03/03/2026 REV: B



SIZE	A	B	C	E-ØF	G1	G2	G3	J1 (SQ.)	ØK	ØL	ØM	N1	N2	ØW	ISO 5211	WEIGHT (lbs)	Cv	WET TORQUE (in-lbf)
14"	1.77 (45)	18.74 (476)	3.19 (81)	12-1"-8	14.49 (368)	11.02 (280)	3.35 (85)	0.87 (22)	0.51 (13)	4.02 (102)	4.92 (125)	3.19 (81)	9.02 (229)	11.81 (300)	F10	137	11680	7015
16"	2.01 (51)	21.24 (540)	3.54 (90)	16-1"-8	15.75 (400)	11.97 (304)	4.53 (115)	1.06 (27)	0.71 (18)	5.51 (140)	6.89 (175)	7.48 (190)	8.19 (208)	11.81 (300)	F14	242	16062	8105
18"	2.01 (51)	22.76 (578)	4.29 (109)	16-1-1/8"-7	16.73 (425)	14.25 (362)	4.53 (115)	1.18 (30)	0.71 (18)	5.51 (140)	6.89 (175)	7.48 (190)	8.19 (208)	11.81 (300)	F14	302	21275	9404
20"	2.52 (64)	25.00 (635)	5.31 (135)	20-1-1/8"-7	18.90 (480)	14.49 (368)	5.20 (132)	1.26 (32)	0.71 (18)	5.51 (140)	6.89 (175)	9.25 (235)	8.46 (215)	14.96 (380)	F14	428	27355	12544
24"	2.76 (70)	29.51 (750)	6.18 (157)	20-1-1/4"-7	22.13 (562)	17.48 (444)	5.47 (139)	1.57 (40)	0.71 (18)	10.00 (254)	11.81 (300)	12.80 (325)	8.39 (213)	14.96 (380)	F25	716	42254	19615

PRODUCT INFORMATION:
 1. SEAT MATERIAL AVAILABLE IN: BUNA, EPDM, VITON
 2. GEAR OP STANDARD
 3. DESIGNED FOR DEAD END SERVICE
 4. COMPLETE BUTTERFLY VALVE AUTOMATION

APPLICABLE STANDARDS:
 1. API 609: DESIGN CODE/ FACE TO FACE
 2. ISO 5211: MOUNTING
 3. API 598: INSPECTION AND TEST
 4. ANSI 150LB: END STANDARD

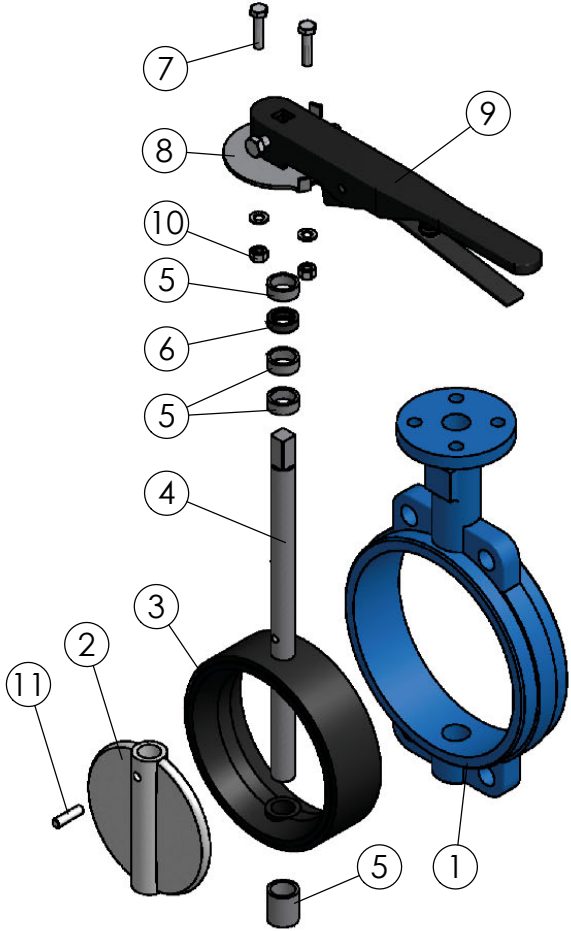
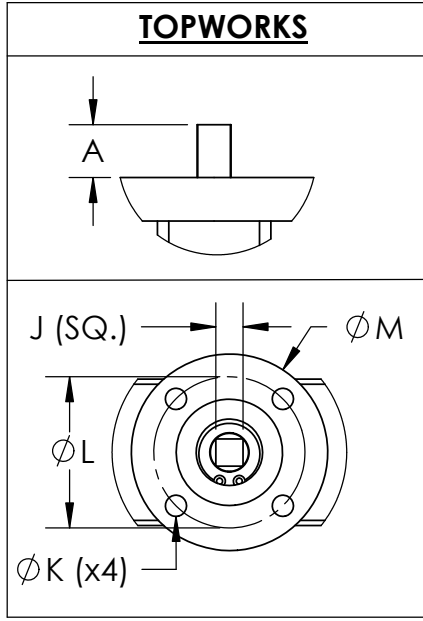
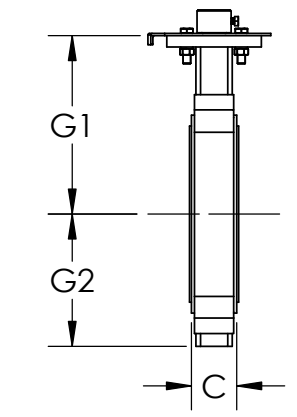
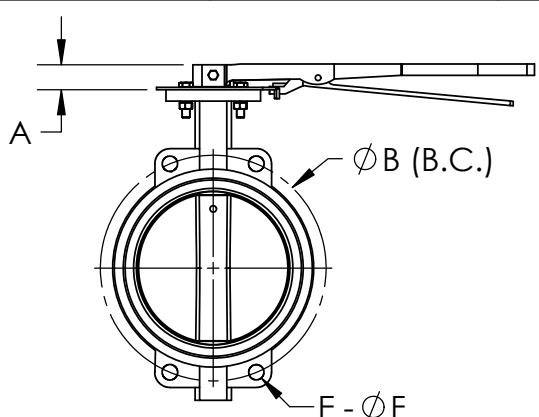
ITEM NO.	DESCRIPTION	MATERIALS	QTY.
1	BODY	A536	1
2	DISC	A351-CF8M	1
3	SEAT	BUNA EPDM VITON	1
4	SHAFT	410 STAINLESS STEEL	1
5	BUSHING	PTFE	4
6	O-RING	BUNA EPDM VITON	1
7	BOLT	304 STAINLESS STEEL	4
8	GEAR OPERATOR	CAST IRON	1
9	PIN	316 STAINLESS STEEL	2
10	FIX SCREW QTY: 14"-18": 6, 20"-24": 8	CARBON STEEL	-
11	SCREW CAP QTY: 14"-18": 6, 20"-24": 8	COMPOSITES	-

DRAWN BY C.L.	DATE 03/30/2021
CHECKED BY K.C.	DATE 03/03/2026
APPROVED BY J.S.	DATE 03/03/2026
<small>(FOR REF ONLY IF NOT APPROVED)</small>	
THE INFORMATION CONTAINED IN THIS DRAWING IS THE SOLE PROPERTY OF SVF FLOW CONTROLS, INC. ANY REPRODUCTION IN PART OR IN WHOLE WITHOUT THE WRITTEN CONSENT OF SVF FLOW CONTROLS, INC. IS PROHIBITED.	
PROJECTION THIRD ANGLE	

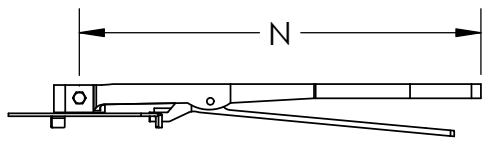
OSVF FLOW CONTROLS
 5595 Fresca Drive • La Palma, CA 90623 • 1.800.783.7836
 www.SVF.net • Sales@SVF.net

DESCRIPTION: 14" - 24" STREAMLINE SLB LUG BUTTERFLY VALVE	UNITS: INCH (MILLIMETERS)	DATE: 03/30/2021	REV: B
--	---------------------------	------------------	--------

SIZE	A	B	C	E-øF	G1	G2	J1 (SQ.)	øK	øL	øM	N	ISO 5211	WEIGHT (lbs)	Cv	WET TORQUE (in-lbf)
2"	1.18 (30)	4.74 (120)	1.81 (46)	4 - 0.75 (19)	6.38 (162)	2.99 (76)	0.35 (9)	0.43 (11)	2.76 (70)	3.54 (90)	10.35 (263)	F07	7	113	134
2-1/2"	1.18 (30)	5.49 (140)	1.93 (49)	4 - 0.75 (19)	6.89 (175)	3.50 (89)	0.35 (9)	0.43 (11)	2.76 (70)	3.54 (90)	10.35 (263)	F07	9	192	150
3"	1.18 (30)	6.00 (153)	1.93 (49)	4 - 0.75 (19)	7.13 (181)	3.74 (95)	0.35 (9)	0.43 (11)	2.76 (70)	3.54 (90)	10.35 (263)	F07	9	296	206
4"	1.18 (30)	7.50 (190)	2.17 (55)	8 - 0.75 (19)	7.87 (200)	4.49 (114)	0.43 (11)	0.43 (11)	2.76 (70)	3.54 (90)	10.35 (263)	F07	12	588	355
5"	1.18 (30)	8.50 (216)	2.30 (59)	8 - 0.87 (22)	8.39 (213)	5.00 (127)	0.55 (14)	0.43 (11)	2.76 (70)	3.54 (90)	10.35 (263)	F07	16	1001	552
6"	1.18 (30)	9.50 (242)	2.30 (59)	8 - 0.87 (22)	8.86 (225)	5.51 (140)	0.55 (14)	0.43 (11)	2.76 (70)	3.54 (90)	10.35 (263)	F07	19	1548	910
8"	1.42 (36)	11.75 (299)	2.52 (64)	8 - 0.87 (22)	10.24 (260)	6.97 (177)	0.67 (17)	0.51 (13)	4.02 (102)	4.92 (125)	14.02 (356)	F10	31	3075	1695
10"	1.42 (36)	14.25 (362)	2.82 (72)	12 - 0.98 (25)	11.50 (292)	7.99 (203)	0.87 (22)	0.51 (13)	4.02 (102)	4.92 (125)	14.02 (356)	F10	43	5235	2791
12"	1.42 (36)	17.00 (432)	3.19 (81)	12 - 0.98 (25)	13.19 (335)	9.53 (242)	0.87 (22)	0.51 (13)	4.02 (102)	4.92 (125)	14.02 (356)	F10	67	8085	4235



MALLEABLE LEVERS:



PRODUCT INFORMATION:
 1. SEAT MATERIAL AVAILABLE IN: BUNA, EPDM, VITON
 2. TEN POSITION LEVER HANDLE
 3. GEAR OP AVAILABLE
 4. COMPLETE BUTTERFLY VALVE AUTOMATION

APPLICABLE STANDARDS:
 1. API 609: DESIGN CODE/ FACE TO FACE
 2. ISO 5211: MOUNTING
 3. API 598: INSPECTION AND TEST
 4. ANSI 125LB/150LB: END STANDARD

ITEM NO.	DESCRIPTION	MATERIALS	QTY.
1	BODY	A536	1
2	DISC	A351-CF8M	1
3	SEAT	BUNA EPDM VITON	1
4	SHAFT	410 STAINLESS STEEL	1
5	BUSHING	PTFE	4
6	O-RING	BUNA EPDM VITON	1
7	BOLT	304 STAINLESS STEEL	2
8	INDICATOR	GALVANIZED STEEL	1
9	HANDLE LEVER	MALLEABLE IRON	1
10	NUT	304 STAINLESS STEEL	2
11	PIN	316 STAINLESS STEEL	-

DRAWN BY C.L. CHECKED BY K.C. APPROVED BY J.S. <small>(FOR REF ONLY IF NOT APPROVED)</small>	DATE 01/21/2022 DATE 03/03/2026 DATE 03/03/2026	<p>5595 Fresca Drive • La Palma, CA 90623 • 1.800.783.7836 www.SVF.net • Sales@SVF.net</p>
DESCRIPTION: 2" - 12" STREAMLINE SLB WAFER BUTTERFLY VALVE		
<small>THE INFORMATION CONTAINED IN THIS DRAWING IS THE SOLE PROPERTY OF SVF FLOW CONTROLS, INC. ANY REPRODUCTION IN PART OR IN WHOLE WITHOUT THE WRITTEN CONSENT OF SVF FLOW CONTROLS, INC. IS PROHIBITED.</small>		UNITS: INCH (MILLIMETERS) DATE: 03/03/2026 REV: B