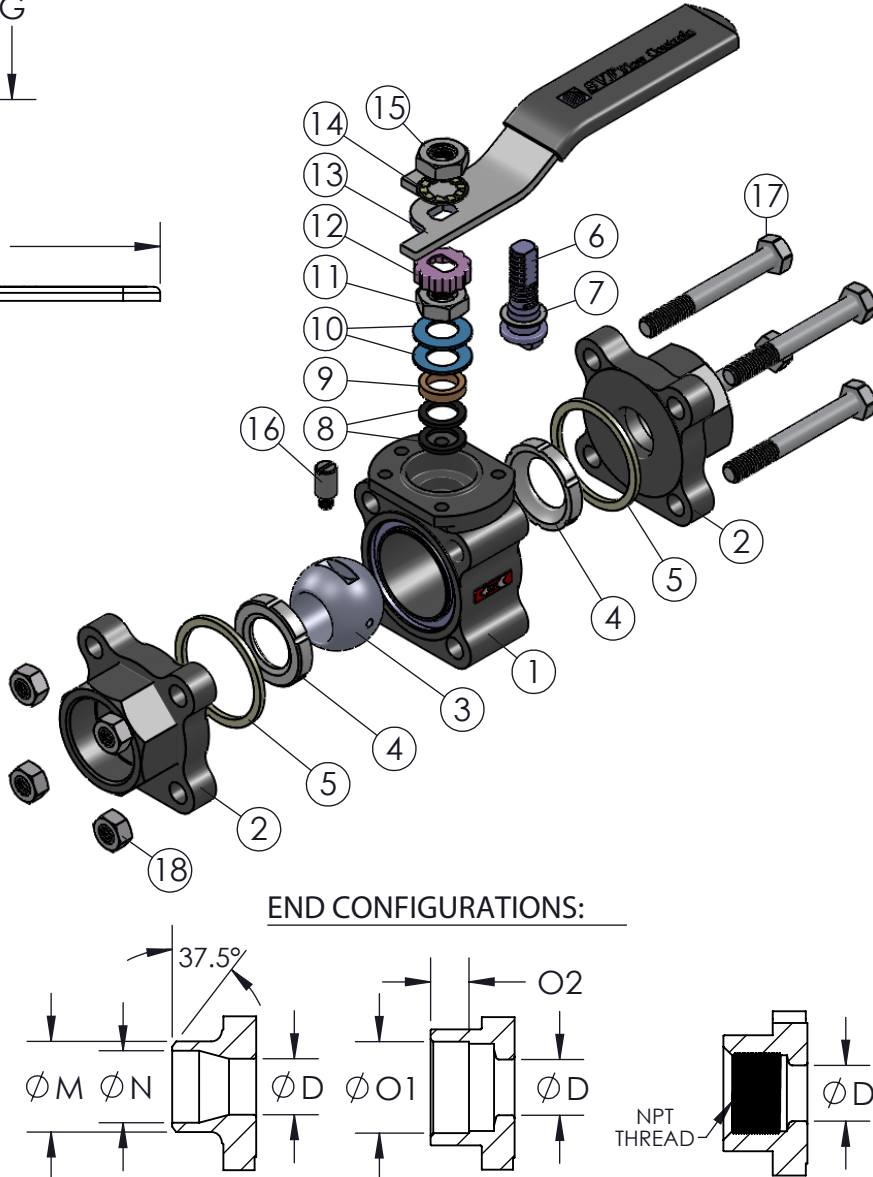
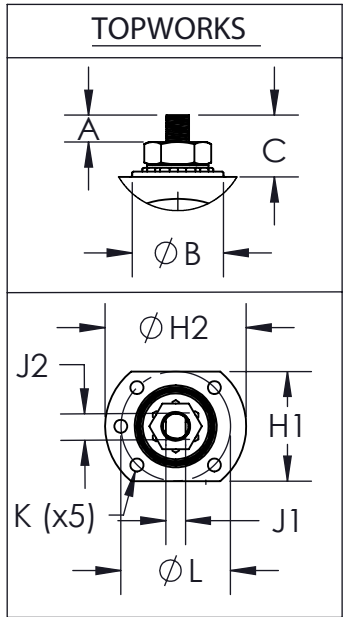
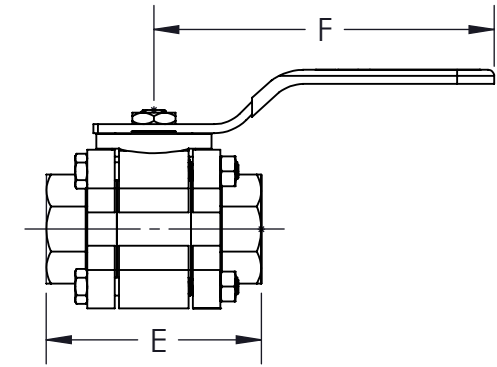
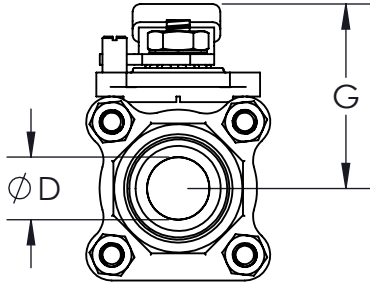


* FULL PORT VALVES
 ** AT FULL DIFFERENTIAL PRESSURE FOR CLEAN FLUIDS WITH
 TFM1600 SEATS

SIZE	A	øB	C	øD	E	F	G	H1	øH2	J1	J2	K	øL	øM	øN	øO1	O2	NPT THREAD	ISO 5211	WEIGHT (lbs)	Cv	TORQUE** (in-lbf)	BODY BOLT SIZE	BODY NUT SIZE
1/4" *	0.21 (5)	1.0 (25)	0.37 (9)	0.44 (11)	2.60 (66)	5.0 (127)	1.8 (46)	1.5 (38)	1.8 (46)	0.22 (6)	0.37 (9)	M5-0.8	1.42 (36)	0.54 (14)	0.36 (9)	0.56 (14)	0.44 (11)	1/4"-18NPT	F03	2	3	45	M6-1.0 X 45	M6-1.0P
3/8" *	0.21 (5)	1.0 (25)	0.37 (9)	0.44 (11)	2.60 (66)	5.0 (127)	1.8 (46)	1.5 (38)	1.8 (46)	0.22 (6)	0.37 (9)	M5-0.8	1.42 (36)	0.68 (17)	0.49 (12)	0.69 (18)	0.44 (11)	3/8"-18NPT	F03	2	5	45	M6-1.0 X 45	M6-1.0P
1/2"	0.21 (5)	1.0 (25)	0.37 (9)	0.44 (11)	2.60 (66)	5.0 (127)	1.8 (46)	1.5 (38)	1.8 (46)	0.22 (6)	0.37 (9)	M5-0.8	1.42 (36)	0.84 (21)	0.62 (16)	0.86 (22)	0.44 (11)	1/2"-14NPT	F03	2	8	45	M6-1.0 X 45	M6-1.0P
3/4"	0.23 (6)	1.0 (25)	0.37 (9)	0.56 (14)	2.81 (71)	5.0 (127)	1.9 (48)	1.5 (38)	1.8 (46)	0.22 (6)	0.37 (9)	M5-0.8	1.42 (36)	1.05 (27)	0.82 (21)	1.07 (27)	0.56 (14)	3/4"-14NPT	F03	2	12	45	M6-1.0 X 50	M6-1.0P
1"	0.34 (9)	1.2 (30)	0.70 (18)	0.82(21)	3.70 (94)	6.0 (152)	2.4 (61)	1.7 (43)	2.1 (53)	0.30 (8)	0.43 (11)	M5-0.8	1.65 (42)	1.32 (34)	1.05 (27)	1.33 (34)	0.56 (14)	1"-11.5NPT	F04	4	32	100	M8 - 1.25 X 65	M8-1.25P
1-1/4"	0.34 (9)	1.2 (30)	0.93 (24)	1.00 (25)	4.25 (108)	6.0 (152)	2.6 (66)	1.7 (43)	2.1 (53)	0.30 (8)	0.43 (11)	M5-0.8	1.65 (42)	1.66 (42)	1.38 (35)	1.68 (43)	0.53 (13)	1-1/4"-11.5NPT	F04	5	57	130	M8 - 1.25 X 75	M8-1.25P
1-1/2"	0.40 (10)	1.4 (36)	1.18 (30)	1.25 (32)	4.57 (116)	7.0 (178)	3.2 (81)	2.1 (53)	2.6 (66)	0.34 (9)	0.56 (14)	M6-1.0	1.97 (50)	1.90 (48)	1.61 (41)	1.92 (49)	0.53 (13)	1-1/2"-11.5NPT	F05	7	80	280	M10 - 1.5 X 85	M10-1.5P
2"	0.40 (10)	1.4 (36)	1.18 (30)	1.50 (38)	5.04 (128)	7.0 (178)	3.3 (84)	2.1 (53)	2.6 (66)	0.34 (9)	0.56 (14)	M6-1.0	1.97 (50)	2.38 (60)	2.07 (53)	2.41 (61)	0.68 (17)	2"-11.5NPT	F05	11	104	360	M10 - 1.5 X 95	M10-1.5P



PRODUCT INFORMATION:

1. END CONNECTIONS AVAILABLE IN: SCREWED (FNPT), SOCKET WELD AND BUTT WELD (SCH-40 OR SCH-10)
2. SERVICES INCLUDE: DRY CHLORINE (LIQUID OR GAS)
3. ARROW LOCATED ON THE BODY INDICATES DOWNSTREAM DIRECTION
4. BALL WITH RELIEF HOLE RELIEVES PRESSURE IN THE UPSTREAM DIRECTION WHEN CLOSED
5. BALL IS VENTED ON THE STEM SLOT AREA
6. MANGANESE PHOSPHATE COATING ON WCB CARBON STEEL
7. COMPLETE VALVE AUTOMATION

OPTIONS :

1. OVAL HANDLE
2. LOCKING DEVICE
3. ISO STEM EXTENSION

APPLICABLE STANDARDS:

1. ASME B16.34: DESIGN
2. API 598: INSPECTION AND TESTING
3. ISO 5211: MOUNTING
4. ANSI B1.20.1: NPT
5. ANSI B16.11: SOCKET-WELDING
6. ANSI B16.25: BUTT WELD ENDS
7. USP CLASS VI: CONFIRMATION OF COMPLIANCE (TFM1600/PTFE MATERIAL)

ITEM NO.	DESCRIPTION	MATERIALS	QTY.
1	BODY	A216-WCB	1
2	END	A216-WCB	2
3	BALL	B164-N0440 A494 CW-12MW	1
4	SEAT	TFM1600	2
5	BODY SEAL	PTFE	2
6	STEM	B164-N0440 A494 CW-12MW	1
7	STEM THRUST WASHER	SUPRALON	1
8	STEM SEAL	SUPRALON	2
9	GLAND FOLLOWER	304 STAINLESS STEEL	1
10	BELLEVILLE WASHER	17-7PH STAINLESS STEEL	2
11	JAM NUT	304 STAINLESS STEEL	1
12	LOCK TAB	304 STAINLESS STEEL	1
13	LEVER HANDLE	304 STAINLESS STEEL	1
14	SERRATED LOCK WASHER	304 STAINLESS STEEL	1
15	HANDLE NUT	304 STAINLESS STEEL	1
16	STOP PIN	304 STAINLESS STEEL	1
17	BODY BOLT	304 STAINLESS STEEL	4
18	BODY NUT	304 STAINLESS STEEL	4

DRAWN BY: E.P.
 DATE: 05/30/2017
 CHECKED BY: E.G.
 DATE: 10/30/2017
 APPROVED BY: J.S.
 DATE: 10/30/2017

PROJECTION THIRD ANGLE

DESCRIPTION:
 1/4" - 3/8" C8 3-PIECE CHLORINE SERVICE VALVE, FULL PORT &
 1/2" - 2" C8 3-PIECE CHLORINE SERVICE VALVE, STANDARD PORT



UNITS: INCH (MILLIMETERS) DATE: 10/30/2017 REV: B