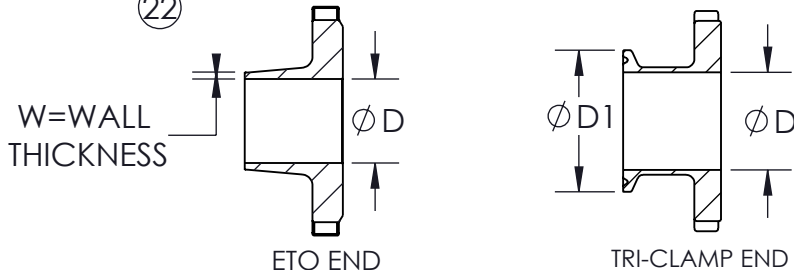
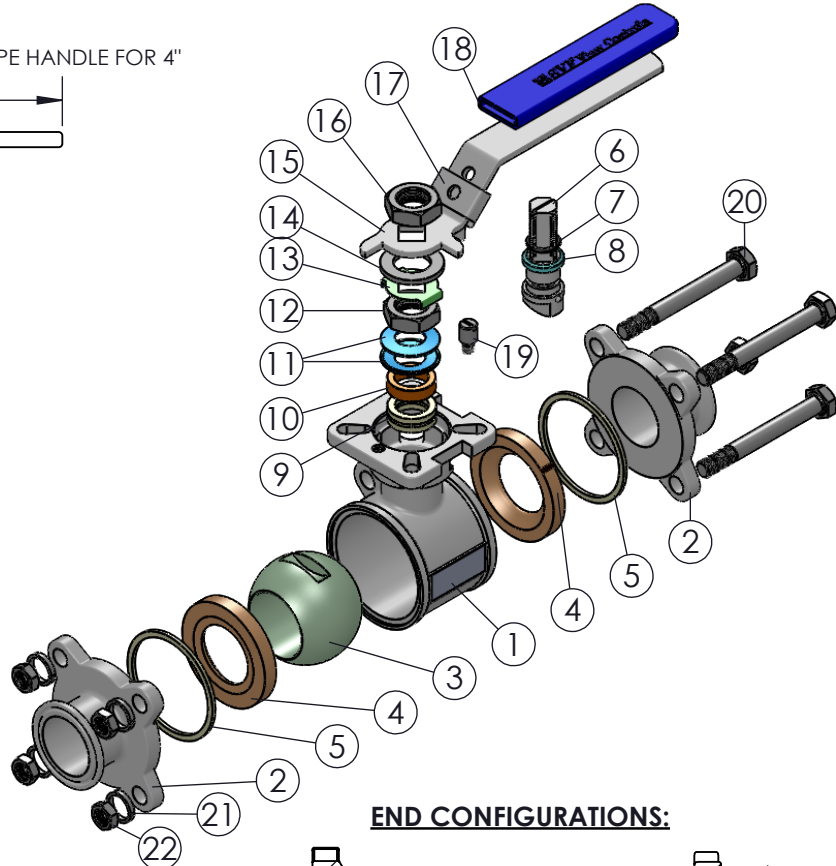
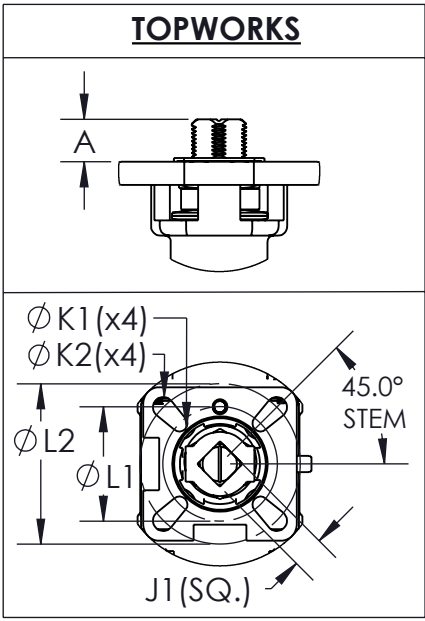
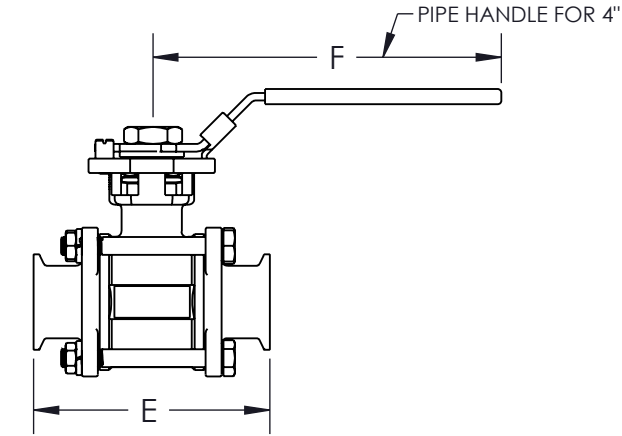
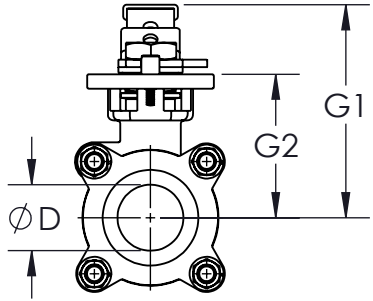


* AT FULL DIFFERENTIAL PRESSURE FOR CLEAN FLUIDS WITH PTFE SEATS

SIZE	A	øD	øD1	E	F	G1	G2	W	J1	øK1	øK2	øL1	øL2	ISO 5211	WEIGHT (lbs)	Cv	TORQUE* (in-lbf)	BODY BOLT SIZE	BODY NUT SIZE
1/2"	0.33 (8.5)	0.37 (9)	0.98 (25)	3.50 (89)	4.40 (112)	2.87 (73)	1.45 (37)	0.065 (1.7)	0.35 (9)	0.24 (6)	0.27 (7)	1.42 (36)	1.97 (50)	F03-F05	1	13	88	5/16" x 48	5/16"
3/4"	0.33 (8.5)	0.61 (16)	0.98 (25)	3.97 (101)	4.40 (112)	3.18 (81)	1.77 (45)	0.065 (1.7)	0.35 (9)	0.24 (6)	0.27 (7)	1.42 (36)	1.97 (50)	F03-F05	2	18	132	5/16" x 48	5/16"
1"	0.37 (9.5)	0.87 (22)	2.01 (51)	4.49 (114)	5.35 (136)	3.54 (90)	2.08 (53)	0.065 (1.7)	0.35 (9)	0.24 (6)	0.27 (7)	1.42 (36)	1.97 (50)	F03-F05	3	48	265	5/16" x 63	5/16"
1-1/2"	0.55 (14)	1.37 (35)	2.01 (51)	5.51 (140)	7.79 (198)	4.52 (115)	2.95 (75)	0.065 (1.7)	0.55 (14)	0.28 (7)	0.35 (9)	1.97 (50)	2.76 (70)	F05-F07	5	120	398	3/8" x 88	3/8"
2"	0.53 (13.7)	1.87 (47)	2.52 (64)	6.14 (156)	7.79 (198)	4.88 (124)	3.26 (83)	0.065 (1.7)	0.55 (14)	0.28 (7)	0.35 (9)	1.97 (50)	2.76 (70)	F05-F07	7	190	531	3/8" x 102	3/8"
2-1/2"	0.70 (18.0)	2.37 (60)	3.07 (78)	7.76 (197)	10.5 (267)	6.10 (155)	4.29 (109)	0.065 (1.7)	0.67 (17)	0.39 (10)	0.47 (12)	2.76 (70)	4.02 (102)	F07-F10	18	450	663	1/2" x 145	1/2"
3"	0.70 (18.0)	2.87 (73)	3.58 (91)	9.01 (229)	10.5 (267)	6.45 (164)	4.64 (118)	0.065 (1.7)	0.67 (17)	0.39 (10)	0.47 (12)	2.76 (70)	4.02 (102)	F07-F10	20	600	690	1/2" x 165	1/2"
4"	0.70 (18.0)	3.83 (97)	4.68 (119)	9.49 (241)	12.6 (322)	8.54 (217)	6.06 (154)	0.083 (2.1)	0.67 (22)	0.39 (10)	0.47 (12)	2.76 (70)	4.02 (102)	F07-F10	30	1100	1354	5/8" x 194	5/8"



PRODUCT INFORMATION:
 1. BLOW-OUT PROOF STEM
 2. LOCKING DEVICE
 3. ANTI-STATIC DEVICE
 4. LIVE LOADING STEM SEAL
 5. INTERNAL SURFACE FINISH OF 20 Ra
 6. COMPLETE VALVE AUTOMATION

APPLICABLE STANDARDS:
 1. ASME B16.34: DESIGN
 2. ISO 5211: MOUNTING
 3. API 598: INSPECTION AND TESTING
 4. CGA G-4.1: CLEANING FOR OXYGEN SERVICE
 5. USP CLASS VI: CONFIRMATION OF COMPLIANCE (PTFE MATERIAL)

ITEM NO.	DESCRIPTION	MATERIALS	QTY.
1	BODY	A351-CF8M	1
2	END	A351-CF8M	2
3	BALL	A351-CF8M	1
4	SEAT	PTFE	2
5	BODY SEAL	PTFE	2
6	STEM	A276-316	1
7	STEM O-RING	VITON	1
8	STEM THRUST WASHER	PTFEE	1
9	STEM SEAL	PTFE	3
10	GLAND FOLLOWER	304 STAINLESS STEEL	1
11	BELLEVILLE WASHER	301 STAINLESS STEEL	2
12	STEM NUT	304 STAINLESS STEEL	1
13	LOCK TAB	304 STAINLESS STEEL	1
14	HANDLE WASHER	304 STAINLESS STEEL	1
15	LEVER HANDLE	304 STAINLESS STEEL	1
16	HANDLE NUT	304 STAINLESS STEEL	1
17	LOCKING DEVICE	304 STAINLESS STEEL	1
18	HANDLE SLEEVE	PVC	1
19	STOP PIN	304 STAINLESS STEEL	1
20	BODY BOLT	304 STAINLESS STEEL	4
21	SPRING WASHER	304 STAINLESS STEEL	4
22	BODY NUT	304 STAINLESS STEEL	4

DRAWN BY: B.B. DATE: 03/13/2022
 CHECKED BY: B.B. DATE: 03/13/2022
 APPROVED BY: J.S. DATE: 03/13/2022
(FOR REF ONLY IF NOT APPROVED)

SVF FLOW CONTROLS
 5595 Fresca Drive • La Palma, CA 90623 • 1.800.783.7836
 www.SVF.net • Sales@SVF.net

DESCRIPTION: 1/2" - 4" SB9B 3-PIECE SANITARY BALL VALVE, TRI-CLAMP ENDS
 UNITS: INCH (MILLIMETERS) DATE: 03/22/2018 REV: D