

SVF

FLOW CONTROLS

Valves | Actuators | Controls



PRODUCT SELECTION GUIDE



- ▶ SVF was formed in 1988 to serve the Process Industries with a complete offering of high-performance ball valves, actuators and controls.
- ▶ We are internationally recognized for offering control products that meet the Quality, Specifications and Standards of the global marketplace.
- ▶ As an ISO-9001 certified company, we are committed to quality and to continuous improvement in all that we do.

MARKETS WE SERVE



Chemical



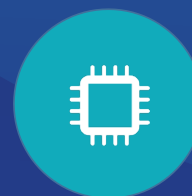
BioTech



Pharmaceutical



Food & Beverage



Semiconductor



Oil & Gas

WE'VE GOT YOU COVERED



SVF FLOW CONTROLS BUSINESS MODEL



CUSTOMER ORIENTED SOLUTIONS

- ▶ Light Fabrication & Assembly Operation in La Palma, CA
- ▶ 60% of Product Custom Configured
- ▶ 8,000 SKUs
- ▶ ISO-9000 2016 Certification
- ▶ CSA certificate for certain valves to ensure our products are high quality and reliable
- ▶ Company's Engineering & Sales Team Engaged with Customer
- ▶ Specifiable Products
- ▶ Webinars, Blogs, & White papers

CLEAN ROOM

- ▶ ISO 6/Cleanroom 1,000 Standard
- ▶ Products Cleaned in Contaminant-Free Room
- ▶ Product assembled and packaged so they aren't exposed to contaminants

CNC MACHINE

- ▶ CNC machines couplers for automated products. They allow torque transmission from an actuator to the valve stem/shaft
- ▶ Cuts time off how quickly we can turn around product orders

SVF Flow Controls Product List

High Performance Ball Valves

PRODUCT	DESCRIPTION	PORT SIZE	PAGE
R8	Three-Piece Ball Valve, High Performance	Standard Port	8
B8	Three-Piece Ball Valve, High Performance	Full Port	8
R9	Three-Piece Ball Valve, Direct Mount	Standard Port	8
B9	Three-Piece Ball Valve, Direct Mount	Full Port	8
L8	Three Piece Instrumentation Ball Valve	Tube-ID	9
FB9	Three-Piece Ball Valve, Fire Safe	Full Port	9
FS7	Three-Piece Ball Valve, Fire Safe	Full Port	9
D8/T7	Three-Piece Diverter Ball Valves	Standard Port	9

High Pressure Ball Valves

PRODUCT	DESCRIPTION	PORT SIZE	PAGE
H7	Three-Piece Ball Valve, High Pressure to 6000 PSI	Standard Port	10
HBEV	Seal Welded Ball Valve, High Pressure to 6000 PSI	Fire Safe Full Port	10
P4	Three-Piece Ball Valve, High Pressure to 5000 PSI	Standard Port	11
R8	Three-Piece Ball Valve, High Pressure, 3000 PSI	Standard Port	11
B8	Three-Piece Ball Valve, High Pressure, 3000 PSI	Full Port	11

Flanged Ball Valves

PRODUCT	DESCRIPTION	PORT SIZE	PAGE
41	ANSI Class 150 Flanged Ball Valve, Fire Safe	Standard Port	12
B41	ANSI Class 150 Flanged Ball Valve, Fire Safe	Full Port	12
B42	ANSI Class 300 Flanged Ball Valve, Fire Safe	Full Port	13
B43	ANSI Class 600 Flanged Ball Valve, Fire Safe	Full Port	13
MB51	ANSI Class 150 Flanged Ball Valve, Multi-Ported	Full Port	13
20SSFL	ANSI Class 150 Flanged Ball Valve	Full Port	13

CleanFLOW™ + CleanTECH™ Hygienic Ball Valves

CleanFLOW™

PRODUCT	DESCRIPTION	PORT SIZE	PAGE
SB7	Three-Piece Hygienic Ball Valve Cast	Tube-ID	14
SB7F	Three-Piece Hygienic Ball Valve Forged	Tube-ID	14
SB79	Three-Piece Hygienic Ball Valve, Hastelloy	Tube-ID	14
SB7X	Three-Piece Hygienic Ball Valve, Fire Safe	Tube-ID	15
TSB7	Three-Piece Hygienic Ball Valve, Multi-Ported, Cast	Tube-ID	15
TSB7F	Three-Piece Hygienic Ball Valve, Multi-Ported, Forged	Tube-ID	15
SMC9	Multi-Ported Hygienic Ball Valve, Cast	Tube-ID	15
OPUS™	Hygienic Steam Trap Test Ball Valve	Tube-ID	15
CleanTECH™			
BZ9-X	Three-Piece Bronze Ball Valve, Med-Gas Service	Full Port	16
SB9-ETO	Three-Piece Sanitary Ball Valve, ETO Ends, Cast	Tube-ID	16
SB9-TRI Clamp	Three-Piece Sanitary Ball Valve, Tri-Clamp Ends, Cast	Tube-ID	16

Butterfly Valves

PRODUCT	DESCRIPTION	PAGE
SLB	Wafer and Lug Style, Class 150, Dead End Service (Lug)	17
SBFV	Sanitary Butterfly Valve, Stainless Steel Body and Disc, Clean Tech Family	17
SURESeal™		
G1L-SS3	LUG 316 Stainless Steel Body, 285 PSI	17
G1L-SSS	LUG 316 Stainless Steel Body, 285 PSI	18
G3L-SSS	LUG 316 Stainless Steel Body, 740 PSI	18
G1L-CSS	Lug Carbon, Steel Body, 285 PSI	18
G3L-CSS	Lug Carbon, Steel Body, 740 PSI	18
G3W-SSS	Wafer 316 Stainless Steel Body, 740 PSI	18
G1W-SS3	Wafer 316 Stainless Steel Body, 150 PSI	19
G3W-CSS	Wafer 316 Stainless Steel Body, 740 PSI	19
G1W-CSS	Wafer Carbon Steel Body, 285 PSI	19
G1W-SSS	Wafer 316 Carbon Steel Body, 285 PSI	19

SVF Flow Controls Product List

Specialty Ball Valves

PRODUCT	DESCRIPTION	PORT SIZE	PAGE
R88/R89	Three-Piece Ball Valve, 100% Hastelloy or Alloy 20	Standard Port	20
N8	Three-Piece Ball Valve, High Temperature Applications Up To 650°F	Standard Port	20
BN8	Three-Piece Ball Valve, High Temperature Applications Up To 650°F	Full Port	20
C8	Three-Piece Ball Valve, Dry or Liquid Chlorine Service	Standard Port	20
7B41	ANSI Class 150 Flanged Ball Valve, H ₂ O ₂ Service	Full Port	21
L6	Two-Piece Instrumentation Ball Valve	Standard Port	21
KB9	Three-Piece Ball Valve, Cryogenic Service	Standard Port	21
V8	Three-Piece Valve, Characterized 15°, 30° & 60° “V” Balls	“V” Port	21
VB41	ANSI Class 150 Flanged Characterized 15°, 30° & 60° “V” Balls	“V” Port	21
VB42	ANSI Class 300 Flanged Valve, Characterized 15°, 30° & 60° “V” Balls	“V” Port	21

Industrial Series

PRODUCT	DESCRIPTION	PORT SIZE	PAGE
BEV9B	Two-Piece Ball Valve, Direct Mount	Full Port	22
EZ9B	Three-Piece Ball Valve, Direct Mount	Full Port	22
MZ9B	Multi-Ported Ball Valve, Direct Mount	Full Port	22
BZ9B	Three-Piece Bronze Ball Valve, Direct Mount	Full Port	22

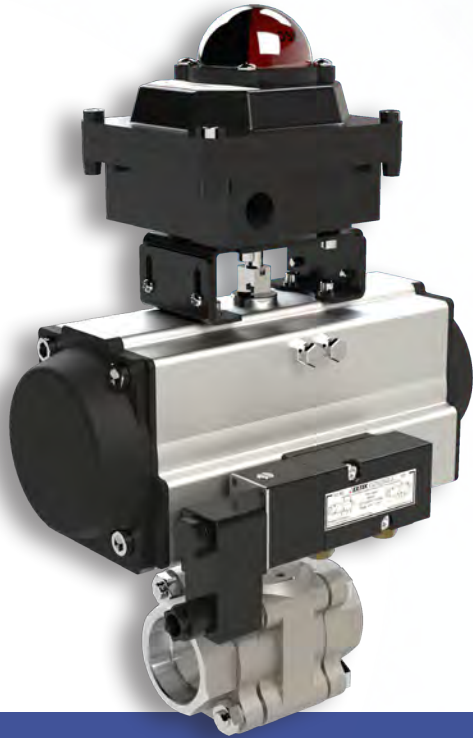
General Purpose

PRODUCT	DESCRIPTION	PORT SIZE	PAGE
15SS	One-Piece Ball Valve, 316 Stainless Steel, 800 WOG	Standard Port	23
20SS	Two-Piece Ball Valve, 316 Stainless Steel, 1000 WOG	Full Port	23
26SS-CS	Two-Piece Ball Valve, 316 Stainless Steel, 2000 WOG	Full Port	
30S -CS	Two-Piece Ball Valve, 316 Stainless & Carbon Steel, 2000 WOG	Full Port	23
40SS	Stainless Steel Gate Valve, 200 WOG		23
50SS	Stainless Steel Globe Valve, 200 WOG		24
60SS	Stainless Steel Check Valve, 200 WOG		24
70SS	Stainless Steel Y-Strainer, 800 WOG		24
500F	Forged Gate Valve, Class 800		24
505F	Forged Globe Valve, Class 800		25
520F	Forged Swing Check Valve, Class 800		25
522F	Forged Check Valve, Class 800		25
400	Cast Steel ANSI Class 150 Flanged Gate Valve		25
405	Cast Steel ANSI Class 150 Flanged Globe Valve		26
422	Cast Steel ANSI Class 150 Flanged Check Valve		26
430	Cast Steel ANSI Class 300 Flanged Gate Valve		26
432	Cast Steel ANSI Class 300 Flanged Check Valve	Full Port	26
435	Cast Steel ANSI Class 300 Flanged Globe Valve		27
759LH	Two-Piece Ball Valve, Forged Brass Body, 600 WOG	Full Port	27
20BZ	Bronze Ball Valve	Full Port	27
CVC	Wafer Body Style Check Valve		27

Actuators and Controls

PRODUCT	DESCRIPTION	PAGE
Actuators		
Aero2 Rack and Pinion Pneumatic Actuator	Double Acting or Spring Return	28
Quad4™ Series 4-Piston Pneumatic Actuator	Double Acting or Spring Return	28
ASD Spring Diaphragm Pneumatic Actuator	Spring Return	28
E-SERIES Electric Actuator	Heavy Duty High Performance Electric Actuator	28
EM-SERIES Electric Actuator	Heavy Duty High Performance Electric Actuator	29
ESR-Series Spring Return Electric Actuator	Heavy Duty Spring Return Electric Actuator	29
Limit Switches		
NEXUS™-LS/NEXUS™-LX Limit Switch	Limit Switch	29
NEXUS™-LP/LPX	Discrete Valve Controller	29
NEXUS™-ID/IX	As-I Protocol	30
NEXUS™-PS	Low Profile, Proximity Switch	30
NEXUS™-TC	Two-Stage Controller	30
Pilot Valves		
VECTOR™ Pilot Valve	NEMA 4, NEMA 7, ATEX or Intrinsically Safe Pilot Valve	30
Positioners		
EXACT Positioner	Pneumatic, Electro-Pneumatic and Digital HART Positioner	30
V SERIES Positioner	Pneumatic or Electro-Pneumatic Positioner	30
Other		
DMO Series	Declutchable Manual Override	30
MGO Series	Manual Gear Operator	30
SC / SX Series	Secondary Containment / Stem Extension	31
VW Series	Filter Regulator	31

High Performance Ball Valves



High Performance Valves from *SVF Flow Controls* are anything but ordinary. Designed for durability, our process-quality ball valves have features which make them widely compatible and easy to install.

High Performance, Ball Valve features:

- ▶ Three-piece construction enables the valves to meet a wide range of piping requirements
- ▶ Bi-directional flow, pressure-assisted sealing guarantees tight shut-off and low torque
- ▶ Blowout proof stem and live loaded stem seal design automatically adjusts for wear and thermal cycling
- ▶ Encapsulated body seal allows for field welding without disassembly
- ▶ Wide variety of options, accessories and materials
- ▶ ISO 5211 mounting pad design
- ▶ Three-Piece valve features “swing-out” design for ease of maintenance
- ▶ Class 300, 600 and 900



R8/B8
Three-Piece Ball Valve
R8 - Standard Port
B8 - Full Port

SIZES
R8: 1/4" - 3"
B8: 1/2" - 2-1/2"

MATERIALS
316 Stainless Steel
Carbon Steel
Hastelloy

END CONNECTIONS
Screwed Ends (FNPT)
Socket Weld Ends
Butt Weld Ends

SEAT MATERIALS
TFM1600™
SupraLon™
Delrin®
PEEK
UHMWPE

Wide range of Seat and Seal materials to meet all Process Applications



R9/B9
Three-Piece Ball Valve
R9 - Standard Port
B9 - Full Port

SIZES
R9: 1/2" - 2"
B9: 1/2" - 2"

MATERIALS
316 Stainless Steel
Carbon Steel

END CONNECTIONS
Screwed Ends (FNPT)
Socket Weld Ends

SEAT MATERIALS
TFM1600™

ISO 5211 mounting pad for easy Direct Mount actuation



L8

Instrumentation
Three-Piece Ball Valve

FB9/FS7

Fire Safe API 607
Three-Piece Ball Valve
Full Port

D8/T7

Diverter (D8)/3-Way (T7)
Ball Valve
Three Piece, Standard Port
Bottom Port

SIZES
1/4" - 1"

SIZES
FB9: 1/2" - 2"
FS7: 3" - 4"

SIZES
D8: 1/4" - 2"
T7: 1/4" - 2"

MATERIALS
316 Stainless Steel

MATERIALS
316 Stainless Steel
Carbon Steel

MATERIALS
316 Stainless Steel
Carbon Steel

END CONNECTIONS
Compression Ends
Compression Male Ends
(without nut & ferrules)

END CONNECTIONS
Screwed Ends (FNPT)
Socket Weld Ends

END CONNECTIONS
Screwed Ends (FNPT)
Socket Weld Ends
Butt Weld Ends

SEAT MATERIALS
TFM1600™
SupraLon™
Delrin®
PEEK
UHMWPE

SEAT MATERIALS
TFM1600™
Delrin® (FS7 Only)

SEAT MATERIALS
TFM1600™
SupraLon™
PTFE
Delrin® (D8 Only)
PEEK (D8 Only)
UHMWPE (D8 Only)

*Compression ends
compatible with all leading
instrument fittings*

*Fire-Safe certification to API-607
Anti-Static stem device*

*Available in a variety of
flow patterns*

*ISO 5211 Mounting pad for easy
Direct Mount actuation*

FM 7400 certified

SVF Flow Controls High Pressure Ball Valves



High-pressure applications require precision engineering, rugged construction and special features for advanced performance and safety. SVF Flow Controls offers a full range of high-pressure valves for all high-pressure applications including hydraulics, steam, chemical, oil and gas.

High Pressure Ball Valve features:

- ▶ Three-piece construction enables the valves to wide range of piping requirements
- ▶ Bi-directional flow, pressure-assisted sealing guarantees tight shut-off and low torque
- ▶ Blowout proof stem and live loaded stem seal design automatically adjusts for wear and thermal cycling
- ▶ Wide variety of options, accessories and materials
- ▶ Three-Piece valve features “swing-out” design for ease of maintenance



H7

High Pressure
Three-Piece Ball Valves
Standard Port

SIZES

1/2" - 2" = 6000 PSI

MATERIALS

316 Stainless Steel
Carbon Steel

END CONNECTIONS

Screwed Ends (FNPT)
Socket Weld Ends
SAE ends on 1/2" & 1"
Code 62 ends on 3/4" & 1"

SEAT MATERIALS

Delrin®
PEEK
UHMWPE

High pressure up to 6000 PSI



HBEV

High Pressure
Seal Welded Ball Valve Full Port
Fire Safe API-607

SIZES

1/2" - 2" = 6000 PSI

MATERIALS

316 Stainless Steel

END CONNECTIONS

Screwed Ends (FNPT)
Socket Weld Ends
SAE ends on 1/2" & 1"

SEAT MATERIALS

Delrin®
PEEK

*Fire Safe to API-607
Anti-Static stem device
ISO 5211 mounting pad for
easy actuation*



P4

High Pressure
Three-Piece Ball Valve
Standard Port

SIZES

1/2" - 1" = 5000 PSI

MATERIALS

316 Stainless Steel
Carbon Steel

END CONNECTIONS

Screwed Ends (FNPT)
Socket Weld Ends
SAE ends on 1/2" & 1"

SEAT MATERIALS

Delrin®
PEEK

High pressure up to 5000 PSI



R8

Process-Quality
Three-Piece Ball Valve
Standard Port

SIZES

1/4" - 1" = 3000 PSI
1-1/4" - 2" = 2000 PSI

MATERIALS

316 Stainless Steel
Carbon Steel
Hastelloy

END CONNECTIONS

Screwed Ends (FNPT)
Socket Weld Ends
Butt Weld Ends

SEAT MATERIALS

Delrin®
PEEK

Encapsulated body seals to facilitate welding without disassembly

ISO 5211 mounting pad for easy actuation



B8

Process-Quality
Three-Piece Ball Valve
Full Port

SIZES

1/2" - 3/4" = 3000 PSI
1" - 1-1/2" = 2000 PSI

MATERIALS

316 Stainless Steel
Carbon Steel

END CONNECTIONS

Screwed Ends (FNPT)
Socket Weld Ends
Butt Weld Ends

SEAT MATERIALS

Delrin®
PEEK

Encapsulated body seals to facilitate welding without disassembly

ISO 5211 mounting pad for easy actuation

SVF Flow Controls Flanged Ball Valves



SVF Flow Controls flanged valves are available in Stainless Steel or Carbon Steel, Standard Port or Full Port ranging in sizes from 1/2" to 8"

Flanged Ball Valve features:

- ▶ Fire Safe Certification to API 607 & 608 with Anti-Static Stem (with Grafoil body seals only)
- ▶ Standard NACE MR0175
- ▶ Live-loaded stem seal ensures seal-tight pressure containment even under thermal cycling
- ▶ Blowout proof stem adds safety and reliability
- ▶ Standard locking handle in both open and closed positions
- ▶ Certified stem for low fugitive emissions



41
Fire Safe
ANSI Class 150
Standard Port Flanged
Ball Valve

SIZES
1-1/2" - 6"

MATERIALS
316 Stainless Steel
Carbon Steel

END CONNECTIONS
150# Flanged Ends

SEAT MATERIALS
TFM1600™
SupraLon™

Standard NACE MR0175

ISO 5211 mounting pad for easy automation

Built-In ISO 5211 direct mounting pad

SupraLon™ seats specifically designed for higher temperature, steam and thermal fluid applications up to 650°F



B41
Fire Safe
ANSI Class 150
Full Port Flanged Ball Valve

SIZES
1/2" - 8"

MATERIALS
316 Stainless Steel
Carbon Steel

END CONNECTIONS
150# Flanged Ends

SEAT MATERIALS
TFM1600™
SupraLon™

Standard NACE MR0175

Chevron (V- Ring) stem seals assures low friction and leak tight performance (available in PTFE Only)

Built-In ISO 5211 direct mounting pad

SupraLon™ seats specifically designed for higher temperature, steam and thermal fluid applications up to 650°F



B42

Fire Safe
ANSI Class 300
Full Port Flanged Ball Valve

SIZES

1/2" - 8"

MATERIALS

316 Stainless Steel
Carbon Steel

END CONNECTIONS

300# Flanged Ends

SEAT MATERIALS

TFM1600™
SupraLon™

Standard NACE MRO175

Chevron (V-Ring) stem seals assures low friction and leak tight performance (PTFE only)

Built-in ISO 5211 direct mounting pad for easy actuation

SupraLon™ seats specifically designed for higher temperature, steam and thermal fluid applications up to 650°F



B43

Fire Safe
ANSI Class 600
Full Port Flanged Ball Valve

SIZES

1/2" - 8"

MATERIALS

316 Stainless Steel
Carbon Steel

END CONNECTIONS

600# Flanged Ends

SEAT MATERIALS

SupraLon™

Standard NACE MRO175

ISO 5211 mounting pad for easy actuation

Worm gear operator handwheel for 6" & 8" valves

SupraLon™ seats specifically designed for higher temperature, steam and thermal fluid applications up to 650°F



MB51

ANSI Class 150
Full Port Multi-Ported Flanged Ball Valve

SIZES

1" - 8"

MATERIALS

316 Stainless Steel
Carbon Steel

END CONNECTIONS

150# Flanged Ends

SEAT MATERIALS

RTFE

ISO 5211 mounting pad for easy actuation

Available with L port or T port



20SSFL

Flanged Ball Valve

SIZES

1" - 8"

MATERIALS

316 Stainless Steel
Carbon Steel

END CONNECTIONS

150# Flanged Ends

SEAT MATERIALS

RTFE

SVF Flow Controls Hygienic Ball Valves



CleanFLOW™ hygienic ball valves by SVF Flow Controls are engineered to be a true process piping component to specifically meet demanding processes found in the pharmaceutical, bio tech, semiconductor, cosmetics, foods and other industries. The port opening of the valve's flow path is dimensionally identical to the adjacent tubing. This "Tube-ID" feature provides predictable flow rates and pressure drops and ensures thorough cleaning and drainability as mandated by ASME-BPE.

Hygienic Ball Valve features:

- ▶ ASME - BPE compliant
- ▶ Complete 316L Stainless Steel construction
- ▶ ISO 5211 mounting pad for easy actuation
- ▶ Encapsulated body seals to facilitate welding without disassembly
- ▶ Controlled delta-ferrite chemistry
- ▶ Live-loaded stem seal ensures seal-tight pressure containment even under thermal cycling
- ▶ Blowout proof stem adds safety and reliability
- ▶ Drainable design with Tube-ID dimensions
- ▶ Standard interior finish is 15 Ra or better
- ▶ Locking handle available in both open and closed position



SB7
Hygienic (Cast)
Three-Piece Ball Valve

SIZES
1/2" - 6"

MATERIALS
316 Stainless Steel
(ASTM A351 CF3MN)

END CONNECTIONS
Tri-Clamp Ends
Extended Tube OD

SEAT MATERIALS
TFM1600™

*Weld bosses for easy
purge porting on ends*

*Cavity filled TFM1600™
seat option available*

*Tube-OD ends designed
for orbital welding*



SB7F
Hygienic (Forged)
Three-Piece Ball Valve

SIZES
1/2" - 4"

MATERIALS
316L Forged
Stainless Steel
(A182-F316L)

END CONNECTIONS
Tri-Clamp Ends
Extended Tube OD

SEAT MATERIALS
TFM1600™

*Cavity filled TFM1600™
seat option available*

*Tube-OD ends designed
for orbital welding*



SB79
Hygienic Three-Piece
Hastelloy Ball Valve

SIZES
1/2" - 2"

MATERIALS
Hastelloy C276
(ASTM A494 CW12MW)

END CONNECTIONS
Tri-Clamp Ends
Extended Tube OD

SEAT MATERIALS
TFM1600™

*Weld bosses for easy
purge porting on ends*

*Cavity filled TFM1600™
seat option available*

*Tube-OD ends designed
for orbital welding*



SB7X

Fire Safe
Hygienic (Cast)
Three-Piece Ball Valve

TSB7

Multi-Ported, Hygienic
(Cast or Forged)
Three-Piece Ball Valve

TSB7F

Three-Piece
Hygienic Ball Valve
(Cast)

SMC9

Multi-Ported, Hygienic
(Cast)

OPUS™

Steam Trap Test Valve

SIZES

1/2" - 2"

SIZES

1/2" - 4"

SIZES

1/2" - 4"

SIZES

1/2" - 4"

SIZES

1/2" - 2"

MATERIALS

316L Stainless Steel
(ASTM A351 CF3MN)

MATERIALS

316L Stainless Steel
(ASTM A351 CF3MN)
316L Forged Stainless
Steel (A182-F316L)

MATERIALS

316L Stainless Steel
(ASTM A351 CF3MN)
316L Forged Stainless
Steel (A182-F316L)

MATERIALS

316L Stainless Steel
(ASTM A351 CF3M)

MATERIALS

316L Stainless Steel
(ASTM A351 CF3MN)

END CONNECTIONS

Extended Tube OD

END CONNECTIONS

Tri-Clamp Ends
Extended Tube OD

END CONNECTIONS

Tri-Clamp Ends
Extended Tube OD

END CONNECTIONS

Tri-Clamp Ends
Extended Tube OD

END CONNECTIONS

Tri-Clamp Ends
Extended Tube OD

SEAT MATERIALS

TFM1600™

SEAT MATERIALS

TFM1600™

SEAT MATERIALS

TFM1600™

SEAT MATERIALS

TFM1600™

SEAT MATERIALS

TFM1600™

API 607 Fire Safe Certification

Built-In ISO 5211 direct mounting pad for easy actuation

Tube-OD ends designed for orbital welding

Cavity filled TFM1600™ seat option available

Side Port or Bottom Port

Tube-OD ends designed for orbital welding

Cavity filled TFM1600™ seat option available

Side Port or Bottom Port

Tube-OD ends designed for orbital welding

Cavity filled TFM1600™ seat

Built-In ISO 5211 direct mounting pad for easy actuation

Side Port design

L-Port and T-Port options

Positive shut-off on all three ports

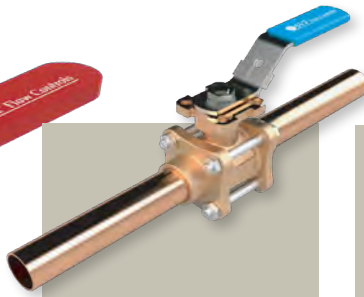
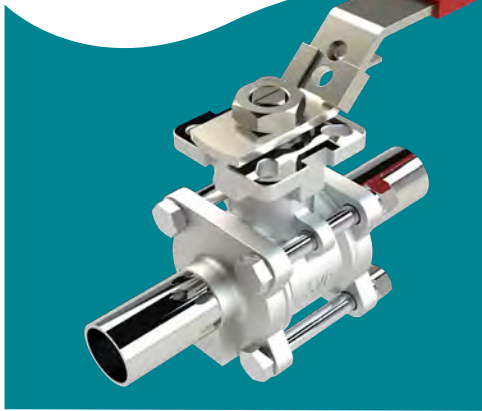
Multifunctional valve providing three stages of fluid control; SERVICE, OPEN AND TRAP

Delivers full flow of clean steam through Tube-ID porting

High-performance steam trap test valve designed exclusively for the high purity, pharmaceutical market

Available with a selection of trap connections, actuation and materials, including 316L cast, 316L forged and Hastelloy

SVF Flow Controls Sanitary Ball Valves



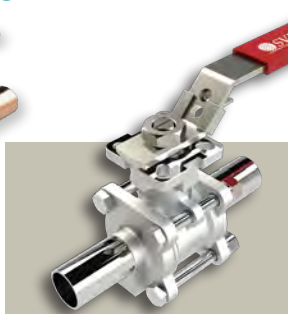
BZ9-X
Medical Gas Bronze
Three-Piece Ball Valve
Full Port

SIZES
1/2" - 2"

MATERIALS
Bronze C84400

END CONNECTIONS
Extended Copper
Type K Tube

SEAT MATERIALS
PTFE



SB9-ETO
Three-Piece Ball Valve
Tube-ID Port

SIZES
1/2" - 4"

MATERIALS
Stainless Steel
(ASTM A351 CF8M)

END CONNECTIONS
Extended Tube OD

SEAT MATERIALS
TFM1600™



**SB9-TRI
CLAMP**
Three-Piece Ball Valve
Tube-ID Port

SIZES
1/2" - 4"

MATERIALS
Stainless Steel
(ASTM A351 CF8M)

END CONNECTIONS
Tri-Clamp Ends

SEAT MATERIALS
TFM1600™



CleanTECH™ ball valves by SVF Flow Controls are manual and automated ball valve solutions for semiconductor, food & beverage, dairy, flavorings and cosmetics & fragrance. All materials comply with applicable ASTM material specifications as well as FDA, USDA and 3A retirements.

Sanitary Ball Valve features:

- ▶ Three piece investment cast stainless steel
- ▶ Standard locking device
- ▶ Built-In ISO 5211 direct mounting pad for easy actuation
- ▶ Live-loaded stem seal ensures seal-tight pressure containment even under thermal cycling
- ▶ Blowout proof stem adds safety and reliability
- ▶ Drainable design with Tube-ID dimensions
- ▶ Standard interior finish is 15 Ra or better

Adjustable Screw Gland

Blowout proof stem adds safety and reliability

Live-loaded stem seal ensures seal-tight pressure containment under continuous cycling

Built in ISO 5211 direct mounting pad for easy automation

Weld bosses for easy purge porting on ends

TFM1600™ seat and body seal material complies with FDA CFR Title 21 Part 177.1550 and USP Class VI

Optional TFM1600™ cavity filled seats available

Weld bosses for easy purge porting on ends

TFM1600™ seat and body seal material complies with FDA CFR Title 21 Part 177.1550 and USP Class VI

Optional TFM1600™ cavity filled seats available

SVF Flow Controls Butterfly Valves



The SVF Flow Controls SLB Series valves are designed for superior performance in general purpose plant-wide applications. The direct-mount feature reduces the size and weight of traditional automated butterfly valves.



Butterfly Valves SLB

SIZES
2" - 24" (Lug)
2" - 12" (Wafer)

MATERIALS
316 Stainless Steel Disc

SEAT MATERIALS
EPDM
BUNA
VITON
PTFE

- Designed for Dead End Service (Lug)*
- Built in ISO 5211 direct mounting pad for easy automation*
- Ductile iron body with epoxy coating*
- Wafer and Lug style*
- PTFE stem bushings*
- 10 position locking handle 2" to 6"*
- Gear Operator 8" - 24"*



Sanitary Butterfly Valve SBFV

SIZES
1 - 1/2" - 4"

MATERIALS
Stainless Steel

SEAT MATERIALS
EPDM

- Standard interior finish is 20 Ra or better*
- Max pressure of 232 PSI (16 bar)*
- Max temperature rating 248°F (130°C)*
- All materials comply with ASTM material specifications, FDA, USDA and 3A*



G1L-SS3 High Performance Butterfly Valve


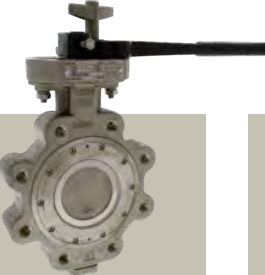



SIZES
2" - 12"

MATERIALS
316 Stainless Steel

SEAT MATERIALS
Glass reinforced PTFE (standard); PTFE; UHMWPE

- Maximum operating temperature 400°F at 100 psi*
- ISO 5211 EN 12116 actuator mounting top works*
- API 609 seat pressure/temperature ratings/blow-out proof stem*
- ASME/ANSI B16.34A, body pressure/temperature ratings*
- ASME/ANSI B16.5 flange dimensions*

SVF Flow Controls Butterfly Valves

				
G1L-SSS High Performance Butterfly Valve	G3L-SSS High Performance Butterfly Valve	G1L-CSS High Performance Butterfly Valve	G3L-CSS High Performance Butterfly Valve	G3W-SSS High Performance Butterfly Valve
SIZES 2" - 36"	SIZES 2" - 20"	SIZES 2" - 36"	SIZES 2" - 24"	SIZES 2" - 18"
MATERIALS 316 Stainless Steel	MATERIALS 316 Stainless Steel	MATERIALS Carbon Steel	MATERIALS Carbon Steel	MATERIALS 316 Stainless Steel
SEAT MATERIALS Glass reinforced PTFE (standard); PTFE; UHMWPE	SEAT MATERIALS Glass reinforced PTFE (standard); PTFE; UHMWPE	SEAT MATERIALS Glass reinforced PTFE (standard); PTFE; UHMWPE	SEAT MATERIALS Glass reinforced PTFE	SEAT MATERIALS Glass reinforced PTFE (standard); PTFE; UHMWPE
<i>Standard interior finish is 20 Ra or better</i>	<i>Standard operating temperature -20°F to 482°F</i>	<i>Standard operating temperature -20°F to 482°F</i>	<i>Maximum operating temperature 400°F at 100 psi</i>	<i>Standard operating temperature -20°F to 482°F</i>
<i>Max pressure of 232 PSI (16 bar)</i>	<i>API 609 seat pressure/temperature ratings/blow-out proof stem</i>	<i>API 609 seat pressure/temperature ratings/blow-out proof stem</i>	<i>API 609 seat pressure/temperature ratings/blow-out proof stem</i>	<i>API 609 seat pressure/temperature ratings/blow-out proof stem</i>
<i>Max temperature rating 248°F (130°C)</i>	<i>ASME/ANSI B16.34A, body pressure/temperature ratings</i>	<i>ASME/ANSI B16.34A, body pressure/temperature ratings</i>	<i>ASME/ANSI B16.34A, body pressure/temperature ratings</i>	<i>ASME/ANSI B16.34A, body pressure/temperature ratings</i>
<i>All materials comply with ASTM material specifications, FDA, USDA and 3A</i>	<i>ASME/ANSI B16.5 flange dimensions</i>	<i>ASME/ANSI B16.5 flange dimensions</i>	<i>ASME/ANSI B16.5 flange dimensions</i>	<i>ASME/ANSI B16.5 flange dimensions</i>
	<i>ISO 5211 EN 12116 actuator mounting top works</i>	<i>ISO 5211 EN 12116 actuator mounting top works</i>	<i>ISO 5211 EN 12116 actuator mounting top works</i>	<i>ISO 5211 EN 12116 actuator mounting top works</i>



G1W-SS3
High Performance
Butterfly Valve

G3W-CSS
High Performance
Butterfly Valve

G1W-CSS
High Performance
Butterfly Valve

G1W-SSS
High Performance
Butterfly Valve

SIZES
2" - 12"

SIZES
2" - 20"

SIZES
2" - 24"

SIZES
2" - 20"

MATERIALS
316 Stainless Steel

MATERIALS
316 Stainless Steel

MATERIALS
Carbon Steel

MATERIALS
316 Carbon Steel

SEAT MATERIALS
Glass reinforced
PTFE (standard);
PTFE; UHMWPE

SEAT MATERIALS
Glass reinforced
PTFE (standard);
PTFE; UHMWPE

SEAT MATERIALS
MEPTFE, PTFE
UHMWPE,
ETFE, PFA

SEAT MATERIALS
Glass reinforced
PTFE (standard);
PTFE; UHMWPE

*Standard operating
temperature -20°F to 482°F*

*Standard operating
temperature -20°F to 482°F*

*Standard operating
temperature -20°F to 482°F*

*Standard operating
temperature -20°F to 482°F*

*ASME/ANSI B16.34A,
body pressure/
temperature ratings*

*API 609 seat pressure/
temperature ratings/
blow-out proof stem*

*API 609 seat pressure/
temperature ratings/
blow-out proof stem*

*API 609 seat pressure/
temperature ratings/
blow-out proof stem*

*ASME/ANSI B16.5 flange
dimensions*

*ASME/ANSI B16.34A,
body pressure/
temperature ratings*

*ASME/ANSI B16.34A,
body pressure/
temperature ratings*

*ASME/ANSI B16.34A,
body pressure/
temperature ratings*

*ISO 5211 EN 12116 actuator
mounting top works*

*ASME/ANSI B16.5 flange
dimensions*

*ASME/ANSI B16.5 flange
dimensions*

*ASME/ANSI B16.5 flange
dimensions*

*ISO 5211 EN 12116 actuator
mounting top works*

*ISO 5211 EN 12116 actuator
mounting top works*

*ISO 5211 EN 12116 actuator
mounting top works*

SVF Flow Controls Specialty Ball Valves



Unique applications, specialty materials, specific handling requirements for hazardous substances - whatever the processing need - SVF Flow Controls has a valve to meet it. All of our products are designed to meet or exceed industry performance and safety standards.



R88/89
Three-Piece Alloy 20 /Hastelloy Ball Valve Standard Port

SIZES
R88: 1/4" - 3"
R89: 1/4" - 3"

MATERIALS
Alloy 20 (R88)
Hastelloy (R89)

END CONNECTIONS
Screwed Ends (FNPT)
Socket Weld Ends
Butt Weld Ends

SEAT MATERIALS
TFM1600™
SupraLon™
Delrin®
PEEK

All wetted parts are 100% Hastelloy (ASTM A494 CW-12MW) or Alloy 20(ASTM A351-CN7M)

Encapsulated body seals to facilitate welding without disassembly

ISO 5211 mounting pad for easy actuation

Other alloys include: Duplex, AL6XN, Inconel, Titanium, various grades of Stainless Steel



Shown with Stem Extension

N8/BN8
Steam & Thermal Fluids Three-Piece Ball Valve N8 - Standard port BN8 - Full

SIZES
N8: 1/4" - 3"
BN8: 1/2" - 2-1/2"

MATERIALS
316 Stainless Steel
Carbon Steel

END CONNECTIONS
Screwed Ends (FNPT)
Socket Weld Ends
Butt Weld Ends

SEAT MATERIALS

High-performance design for industrial steam and thermalfluid applications

SupraLon™ seats specifically designed for higher temperature, steam and thermal fluid applications up to 650°F

Blowout proof stem adds safety and reliability

Encapsulated body seal to facilitate welding without disassembly

Live-loaded stem seal ensures seal-tight pressure containment even under thermal cycling

ISO 5211 mounting pad for easy actuation



C8
Chlorine Service Three-Piece Ball Valve Standard Port

SIZES
1/4" - 2"

MATERIALS
Carbon Steel with Hastelloy or Monel Ball and Stem

END CONNECTIONS
Screwed Ends (FNPT)
Socket Weld Ends
Butt Weld Ends

SEAT MATERIALS
TFM1600™

Ideal for use in dry or liquid Chlorine Service

Meets the Chlorine Institute (Pamphlet 6) for piping systems in Dry Chlorine Service

ISO 5211 mounting pad for easy actuation

Blowout proof stem adds safety and reliability

Live-loaded stem seal ensures seal-tight pressure containment even under thermal cycling



7B41

Hydrogen Peroxide
ANSI Class 150
Full Port Flanged Ball Valve

L6

Instrumentation
Ball Valve

KB9

Cryogenic Three-Piece
Ball Valve
Full Port

V8, VB41 & VB42

Characterized Control
"V" Ball Three Piece and
Flanged Ball Valve

SIZES

1/2" - 8"

SIZES

1/4" - 1"

SIZES

1/2" - 2"

SIZES

V8 (Three Piece): 1/2" - 2"
VB41 & VB42 (Flanged): 1" - 6"

MATERIALS

Stainless Steel

MATERIALS

316 Stainless Steel

MATERIALS

Stainless Steel

MATERIALS

316 Stainless Steel
Carbon Steel

END CONNECTIONS

150# Flanged Ends

END CONNECTIONS

Compression Ends

END CONNECTIONS

Screwed Ends (FNPT)
Socket Weld Ends
Butt Weld Ends

END CONNECTIONS

Screwed Ends (FNPT)
Socket Weld Ends
150# Flanged Ends (VB41)
300# Flanged Ends (VB42)

SEAT MATERIALS

TFM1600™

SEAT MATERIALS

TFM1600™

SEAT MATERIALS

PCTFE

SEAT MATERIALS

TFM1600™
SupraLon™

316 Stainless Steel
cast materials

Passivated for H₂O₂
applications

All valves cleaned, bagged and
sealed according
to ASTM6-93

Built in ISO 5211 mounting pad
for easy actuation

TFM1600™ seats and
PTFE seats are compatible
with H₂O₂

Blowout proof stem adds
safety and reliability

Blowout proof stem adds
safety and reliability

Live-loaded stem seal ensures
seal-tight pressure
containment under
continuous cycling

Meets testing r
equirements of BS6364 Stan-
dard

Blowout proof stem adds
safety and reliability

Designed for applications with
temperatures down to -320°F
ISO 5211 mounting pad for easy
actuation

Three-Piece "swing out"
design offers easy
access for in-line
maintenance

Standard Anti-Static device

ANSI Class 150 & Class
300 Flange End Options
Available

Designed for fine control in a
wide range of services

Blowout proof stem adds safety
and reliability

Live-loaded stem seal ensures
seal-tight pressure containment
even under thermal cycling

ISO 5211 mounting pad for
easy actuation

Characterized "V" Balls
available in 15°, 30°
and 60° angles

SVF Flow Controls Industrial Products



BEV9B

Direct Mount Ball Valve
Full Port

SIZES

1/2" - 4"

Pressure rated for
1000 WOG

316 Stainless Steel body,
ball and stem

316 Stainless Steel ends

Blowout proof stem
adds safety & reliability

Threaded Ends (FNPT)



EZ9B

Direct Mount Ball Valve
Full Port

SIZES

1/2" - 2"

Pressure rated for
1000 WOG

316 Stainless Steel body,
ball and stem

316 Stainless Steel ends

Blowout proof stem
adds safety & reliability

Threaded Ends (FNPT)



MZ9B

Direct Mount Ball Valve
Multi-Port

SIZES

1/2" - 2"

Pressure rated for
1000 WOG

Complete 316 Stainless
Steel Construction

L-Port and T-Port options

Positive shut-off on any
of the three ports

Blowout proof stem adds
safety and reliability

Threaded Ends (FNPT)



BZ9

Direct Mount Ball Valve
Full Port

SIZES

1/4" - 2"

Bronze Three Piece
ball valve

Pressure rated for 600psi

Full Port flow path
for maximum flow

Built-In ISO 5211 direct
mounting pad for
easy automation

Blowout proof stem adds
safety and reliability

End connections include
Threaded Ends (FNPT)
Sweat Ends

SVF Flow Controls

General Purpose Products



15SS Series
One-Piece Ball Valve
Standard Port

SIZES
1/4" - 2"

MATERIALS
Stainless Steel

END CONNECTIONS
Threaded Ends (FNPT)

SEAT MATERIALS
RTFE

W.P. 800 WOG

Blow-out Proof Stem

Locking Handle



20SS Series
Two-Piece Ball Valve
Full Port

SIZES
1/4" - 3"

MATERIALS
316 Stainless Steel

END CONNECTIONS
Threaded Ends (FNPT)

SEAT MATERIALS
RTFE

150 WSP

Blow-out Proof Stem

Locking Handle



26SS-CS Series
Two-Piece Ball Valve
Full Port

SIZES
1/4" - 2"

MATERIALS
316 Stainless Steel
Carbon Steel

END CONNECTIONS
Threaded Ends (FNPT)

SEAT MATERIALS
RTFE

W.P. 2000 WOG

Blow-out Proof Stem

Locking Handle



30SS-CS Series
Three-Piece Ball Valve
Full Port

SIZES
1/4" - 4"

MATERIALS
316 Stainless Steel
Carbon Steel

END CONNECTIONS
Threaded Ends (FNPT)
Socket Weld Ends

SEAT MATERIALS
RTFE

W.P. 1000 WOG

Blow-out Proof Stem

Locking Handle

SVF Flow Controls General Purpose Products



50SS Series
Globe Valve

SIZES
1/2" - 2"

MATERIALS
316 Stainless Steel (1/2" - 2")
Carbon Steel (1/4" - 2")

END CONNECTIONS
Threaded Ends (FNPT)

SEAT MATERIALS
RTFE

W.P. 200 WOG
Rising Stem



60SS Series
Check Valve

SIZES
1/2" - 2"

MATERIALS
316 Stainless Steel

END CONNECTIONS
Threaded Ends (FNPT)

SEAT MATERIALS
RTFE

W.P. 200 WOG
Swing Type Disc



70SS Series
Y Strainer

SIZES
1/2" - 2"

MATERIALS
316 Stainless Steel

END CONNECTIONS
Threaded Ends (FNPT)

SEAT MATERIALS
RTFE

W.P.800 WOG
20 Mesh



500F Series
Gate Valve

SIZES
1/4" - 2"

MATERIALS
316 Stainless Steel
Carbon Steel (1/2" - 2")

END CONNECTIONS
Threaded Ends (FNPT)
Socket Weld

Class 800
Trim 8
Maximum Pressure 1
975 PSI
Maximum Temperature 850°F
Bolted Bonnet
API 602 compliant
ASTM A105 or ASTM A182/316L
Standard NACE MRO175



505F Series
Globe Valve

SIZES
1/4" - 2"

MATERIALS
316 Stainless Steel (1/2" - 2")
Carbon Steel (1/4" - 2")

END CONNECTIONS
Threaded Ends (FNPT)
Socket Weld

Class 800

Trim 8

Maximum Pressure
1975 PSI

Maximum Temperature 850°F

Bolted Bonnet

API 602 compliant

ASTM A105 or ASTM A182/316L

Standard NACE MRO175



520F Series
Forged Swing Check Valve

SIZES
1/4" - 2"

MATERIALS
316 Stainless Steel (1/2" - 2")
Carbon Steel (1/4" - 2")

END CONNECTIONS
Threaded Ends (FNPT)
Socket Weld

Class 800

Trim 8

Maximum Pressure
1975 PSI

Maximum Temperature 850°F

Bolted Cover

API 602 compliant

ASTM A105 or ASTM A182/316L

Standard NACE MRO175



522F Series
Forged Check Valve

SIZES
1/4" - 2"

MATERIALS
316 Stainless Steel (1/2" - 2")
Carbon Steel (1/4" - 2")

END CONNECTIONS
FNPT
Socket Weld

Class 800

Trim 8

Maximum Pressure 1975
PSI

Maximum Temperature
850°F

Bolted Cover

API 602 compliant

ASTM A105 or ASTM
A182/316L

Standard NACE MRO175



400 Series
Cast Steel Flanged
Gate Valve

SIZES
2" - 12"

MATERIALS
Cast Steel

END CONNECTIONS
150# Flanged Ends

Trim 8

Maximum Pressure
285 PSI

Maximum Temperature 1000°F

Outside Screw & Yoke

API 600 compliant

ASTM A216

Standard NACE MRO175

SVF Flow Controls General Purpose Products



40SS Series
Gate Valve

SIZES
1/2" - 2"

MATERIALS
316 Stainless Steel
Carbon Steel

END CONNECTIONS
Threaded Ends (FNPT)

SEAT MATERIALS
RTFE

W.P. 200 WOG
Non-Rising Stem



405 Series
Cast Steel Flanged
Globe Valve

SIZES
2" - 12"

MATERIALS
Cast Steel

END CONNECTIONS
150# Flanged Ends

Trim 8

Maximum Pressure
285 PSI

Maximum Temperature 1000°F

Outside Screw & Yoke

Bolted Cover

ASTM A216

Standard NACE MRO175



422 Series
Cast Steel Flanged
Check Valve

SIZES
2" - 12"

MATERIALS
Cast Steel

END CONNECTIONS
150# Flanged Ends

Trim 8

Maximum Pressure
285 PSI

Maximum Temperature 1000°F

Bolted Cover

ASTM A216

Standard NACE MRO175



430 Series
Cast Steel Flanged
Gate Valve

SIZES
2" - 12"

MATERIALS
Cast Steel

SEAT MATERIALS
300# Flanged Ends

Trim 8

Maximum Pressure
740 PSI

Maximum Temperature
1000°F

Outside Screw & Yoke

API 600 compliant

ASTM A216

Standard NACE MRO175



432 Series

Cast Steel Flanged
Check Valve

435 Series

Cast Steel Flanged
Globe Valve

759LH Series

Two-Piece Brass
Ball Valve
Standard Port

20BZ

Two-Piece Ball Valve

Check Valve

CVC Ductile Iron
Wafer Style

SIZES

2" - 12"

SIZES

2" - 8"

SIZES

1/2" - 2"

SIZES

1/2" - 2"

SIZES

2" - 16"

MATERIALS

Cast Steel

MATERIALS

Cast Steel

MATERIALS

Brass C37700

MATERIALS

Bronze
316 Stainless Steel

MATERIALS

Aluminum
Bronze Disc

END CONNECTIONS

300# Flanged Ends

SEAT MATERIALS

300# Flanged Ends

END CONNECTIONS

Threaded Ends (FNPT)

END CONNECTIONS

Threaded Ends (FNPT)

SEAT MATERIALS

RTFE

SEAT MATERIALS

PTFE

SEAT MATERIALS

EPDM

Trim 8

Trim 8

W.P. 600 WOG

W.P. 600 WOG

*Check Valve-Wafer
Style Body*

*Maximum Pressure
285 PSI*

*Maximum Pressure
740 PSI*

Forged Brass Body

Blow-out Proof Stem

300 WOG

*Maximum Temperature
1000°F*

*Maximum Temperature
1000°F*

Blow-out Proof Stem

Locking Handle

*D.I. Body with 304
Stainless
Steel Spring & Shaft*

Bolted Cover

Outside Screw & Yoke

Locking Handle

Bolted Cover

*Spring Loaded Double
Aluminum Bronze Disc*

ASTM A216

ASTM A216

*6", 8", 10" and 12"
Approved
as Chemigation Valve*

Standard NACE MRO175

Standard NACE MRO175

*Suitable for Vertical &
Horizontal Installation*

SVF Flow Controls Actuators



Aero2 Rack and Pinion Series
Pneumatic Actuator

The SVF Flow Controls pneumatic rack and pinion actuator is manufactured using the latest materials and methods to provide dependable and smooth operation in demanding process control conditions.

Hard Anodized aluminum housing

“Versa-View” Continuous mechanical position indicator

Nickel Plated Alloy drive shaft

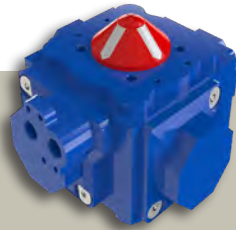
ISO/NAMUR design for universal mounting and accessory attachment

Bi-Directional Stroke Adjustment

1/4” FNPT air inlet manifold

Actuator is designed for 120 PSI supply air pressure

Available in Spring Return or Double Acting models



Quad4 Series
Four-Piston Pneumatic Actuator

The Quad4 is a four-piston actuator which generates torque around a centrally located pinion, giving more than double the torque of a single or double rack and pinion actuator.

ISO 5211 bottom flange for valve automation

NAMUR output drive for installation of limit switches and positioners

Anodized aluminum with polyester coating

Available in Spring Return and Double Acting models

NAMUR interface for mounting of solenoid valve

*1/4” FNPT air inlet manifold
Actuator is designed for 120 PSI supply air pressure*



ASD Series
Spring Diaphragm Actuator

The ASD Spring Diaphragm Actuators are designed for quarter turn applications with minimal media supply pressure the Spring Diaphragm separates the supply media from the springs allowing the actuator to be operated by unfiltered air, gas, water or mineral based hydraulic fluid.

High cycle life and low friction bearing

Field reversible for Fail Open or Fail Closed safety operations

ISO/NAMUR design for universal mounting and accessory attachment

Operated with supply media as low as 15 PSI



E-Series
Electric Actuator

The E-Series are heavy duty electric actuators designed to provide the operating torque required to automate our full line of process-quality valves.

Heavy duty, fully enclosed high performance motor rated for On/Off & modulating service

Corrosion protection with thermally bonded polyester coating

All motors feature integral thermal overload protection

Designed for operation in temperatures from -40°F to 150°F

Controls and Monitoring



EM-Series
Electric Actuator

The EM-Series are geared motors that provide rotary output (torque) to power all types of rotary valves. Rotary action is controlled through two limit switches located in the unit and in conjunction with two cams. Precise setting of either position is achieved by adjusting the cam to activate the switch at exactly the desired point in the rotary cycle.

Heavy duty, fully enclosed high performance motor rated for On/Off & modulating service

Built in thermal protection prevents motor burnout

Available 4-20mA signal input for controls

Available with optional manual override

Available for loads up to 30,000 in-lbs



ESR-Series
Spring Return
Electric Actuator

The ESR-Series actuator is a Spring Return Electric actuator providing protection in an event of a system failure or power loss. A mechanical spring is utilized to position the controlled device to either a fully open or fully closed position without any external power source.

Heavy duty, fully enclosed high performance spring return fail safe actuator

Superbly engineered, emergency shut down device designed for ball, butterfly and quarter turn valves

Built in thermal protection prevents motor burnout

Available 4-20mA signal input for controls

Optional clutchless manual override

Available for loads up to 2,302 in-lbs



**NEXUS-LS/
NEXUS-LX**
Limit Switch

The NEXUS™ Limit Switch is a reliable and compact position feedback device fitted with two mechanical SPDT switches rated for 5A service.

Optional switches and sensors available.

NEMA 4/4X, IP67 (NEXUS-LS™) or ATEX / NEMA 7 (NEXUS-LX™) certified

“Quick-Set” cam is spring loaded and requires no special tools for calibration

Dual 1/2” FNPT conduit entries facilitate wiring in the field and for additional auxiliary pilot valve connections

Captive cover bolts remain intact during wiring to prevent loss

Stainless Steel trim and mounting hardware

Rugged and Compact design



**NEXUS-LP/
NEXUS-LPX**
Discrete Valve Controller

The NEXUS™ discrete valve controller provides an optimized solution for on/off valve control & position sensing for the process industries.

Integrated Solution (switches, sensors, pilot and spool valve in a single platform)

NEMA 4/4X, IP67 (NEXUS-LP™) or ATEX NEMA 7 (NEXUS-LPX™) certified

Suitable for use on rotary applications for double acting or spring return actuators

NAMUR and ISO 5211 adjustable bracket mounting

5/2 Aluminum spool valve, anodized and polyester coated

1/2” FNPT conduit entry

Integrated pilot valve (Cv = 1.4) with manual override to operate spring return and double acting actuator

SVF Flow Controls and Monitoring



**NEXUS-ID/
NEXUS-IX**
Discrete Valve Controller

The NEXUS-ID/IX™ represents the latest As-Interface (As-I) technology for two-wire control and communication for today's sophisticated control system design.



As-I device with two internal sensors and termination points for connecting additional sensors as well as two outputs to operate pilot valves

NEMA 4/4X, IP67 (NEXUS-ID™) or ATEX NEMA 7 (NEXUS-IX™) certified

Suitable for use on rotary applications for double acting or spring return actuators

NAMUR and ISO 5211 adjustable bracket mounting

5/2 Aluminum spool valve, anodized and polyester coated

1/2" FNPT conduit entry



NEXUS-PS
Proximity Switch

The NEXUS-PS™ is a low profile sensor that delivers valve position status in demanding environments (IP67). The technology utilizes two reed devices that sense a magnetic target in the open and closed positions.

Corrosion resistant non-metallic + stainless construction

Hermetically sealed reed elements

Handles both AC and DC current

Zero power required to operate



NEXUS-TC
Two-Stage Controller

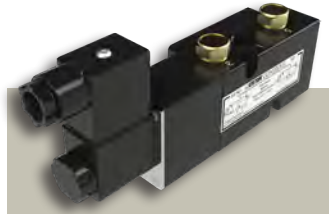
The NEXUS-TC™ is a complete solution incorporating two solenoid valves and configured limit switches designed for two-stage operation.

Fully adjustable set points for flexibility

Two voltage sources required to power both solenoid valves

Contact logic for each solenoid valve can be provided by level sensors, flow meters, PLC, etc.

Available for General Purpose or Hazardous applications



VECTOR Series
Pilot Valve

The VECTOR series pilot valves are UL/CSA approved, direct mount (NAMUR VDI/VDE 3845) valves used to pilot pneumatic actuators.

NEMA 4/4X, IP67 (VECTOR PV4), ATEX NEMA 7, CSA Approved (VECTOR PV6) ATEX NEMA 7 (VECTOR PV7) or Intrinsically Safe, IP65 (VECTOR PV9)

May be used as a 3-way or 4-way pilot valve for spring return and double acting actuators respectively

Available in different voltages (120 VAC, 220 VAC, 12VDC, 24 VDC).

NAMUR mounting interface

Class "F" coil standard (Vector PV4 and PV9), Class "H" coil standard (PV7)

Easily field retrofitted for Spring Return and Double Acting application

Safety Accessories



EXACT Series
Positioner

The EXACT Series positioners control the position of a rotary actuator and its final control element by modulating the flow of air supply to the actuator.

NEMA 4, IP66 certified

EXACT XL controls the position of a rotary actuator in response to an analog 4-20mA signal input

EXACT P3 controls the position of a rotary actuator in response to a controlled input pressure of 3 to 15psi

EXACT DH controls the position of a rotary actuator in response to a digital HART input

NAMUR and ISO 5211 adjustable bracket mounting



V Series
Positioner

The "V" Series Electro-Pneumatic (4-20mA) or Pneumatic (3-15psi) positioners are designed and manufactured to offer years of trouble-free and economical operation.

ATEX NEMA 7 or Intrinsically Safe certified

Modular / field upgradable design

Precision Click-Lock™ Calibration

NAMUR and ISO 5211 mounting

NEMA 4, NEMA 4X



DMO Series
Declutchable Manual
Override

The DMO series allows simple and reliable manual positioning of valves, dampers, and other quarter turn devices to override existing pneumatic or hydraulic rotary actuators.

Compact, modular design fits between valve and actuator for a complete manual override system

ISO 5211 Mounting

Three Stage Coupler (Actuator, Gear, Valve)



MGO Series
Manual Gear Operator

The MGO series features a rugged, industrial grade design suitable for all general industrial applications.

Powder coated exterior finish

ISO 5211 Mounting

Chainwheel option

Cast Iron construction

Safety Accessories



SC/SX Series
Secondary Containment/
Stem Extension

The SC/SX Series adds another level of containment to address fugitive emissions from stem packing.

The design also serves as a robust stem extension for applications on extremely hot lines, steam etc.

Standard ISO 5211 mounting system for modular attachment and field retrofit

Rugged and stable

304 Stainless Steel construction



VW Series
Filter Regulator

The VW series filter regulator provides accurate pressure regulation and high moisture removal.

Compact Design

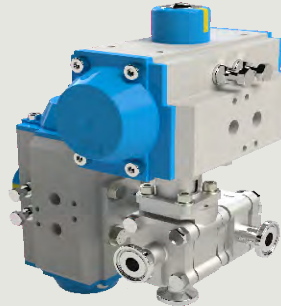
Pressure gauge in PSI and BAR

Maximum Pressure: 230 PSI

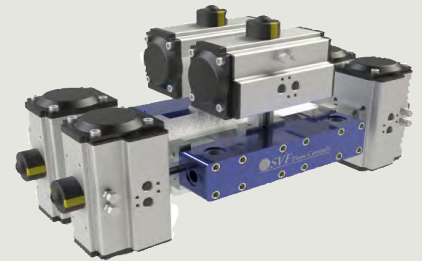
SVF Flow Controls Customized Solutions

Engineered Solutions tailored to meet your requirements

SVF designs and manufactures custom valves through our PRO-SPEC program. Here, we develop “process-specific” valves, automated valve and control packages to meet specific process requirements. Some of the custom projects include:



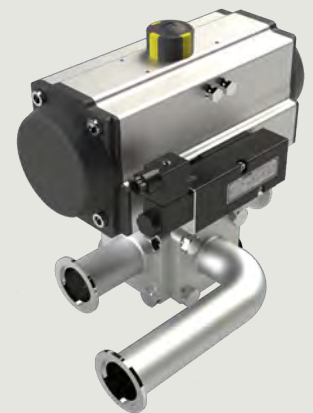
TSB7 Series Manifold



High Pressure Manifold



Tank Bottom Valve



SMC9 Series with Vacuum Ends



SB7 Series with Quad4 actuator and NEXUS-PS proximity switch



SB7 Series with Purge Ports

SVF Flow Controls Standards

	ASTM	American Society for Testing Materials — Develops standards for materials, products, systems and services.
	ANSI	American National Standards Institute — Organization that coordinates work among U.S. Standards writing groups; Works in conjunction with other groups such as ISO, ASME, ASTM, etc.
	API 598	(American Petroleum Institute) Valve Inspection and Testing that covers the testing and inspection requirements for gate, globe, check, ball, plug and butterfly valves.
	ASME	American Society of Mechanical Engineers — Develops standards and testing criteria for finished products.
	ASME-BPE	International standard developed as an aid for the design and construction of equipment Intended for use In the manufacturing of biopharmaceuticals.
	CGA	The Compressed Gas Association (CGA) — Standards, technical information and recommendations dictate safe and environmentally responsible practices in the manufacture, storage, transportation, distribution and use of industrial gases.
	CRN	Canadian Registration Number — Assigned by each province or territory of Canada to accept and register the design of a boiler, pressure vessel, or fitting.
	CSA 3.16	These certifications ensure the valves meet stringent safety and performance standards for use in natural gas and other gas applications.
	FDA	Food and Drug Administration — a Federal agency responsible for protecting and promoting public health through the control and supervision of food safety, tobacco products, dietary supplements, prescription and over-the-counter pharmaceutical drugs, vaccines, biopharmaceuticals, ERED, cosmetics, animal food& feed and veterinary products.
	NSF	NSF International — An organization committed to public health that writes standards and certifies products for food, water and consumer products.
	ISO	5211 International Standards Association — A worldwide process control organization. An internationally recognized certification for manufacturers that comply with high standards of quality control. Developed standards ISO-9000 through ISO-9004
	Lead Free	Dictates that a product has been certified as meeting a weighted average lead content of $\leq 0.25\%$ when used with respect to the wetted surfaces of pipes, pipe fittings, plumbing fittings, and plumbing fixtures.
	RoHS	Restriction of Hazardous Substances — and impacts the entire electronics industry and many electrical products as well.
	REACH	A regulation of the European Union, adopted to improve the protection of human health and the environment from the risks that can be posed by chemicals, while enhancing the competitiveness of the EU chemicals industry.
	UL/FM	Underwriter's Laboratory — Tests and qualifies valve and fittings products under UL standards for safety. Factory Mutual — Develops standards and qualifies products for use by the general public.
	USP	United States Pharmacopeia — Establishes written and physical standards for medicine, food ingredients, dietary supplements, and ingredients.

SVF Flow Controls takes excellence to a new level in the flow control marketplace.

Our extensive product range, highly knowledgeable staff, feature-rich website, digital initiatives and our ongoing customer-focused culture are all part of our role as the best supplier of valve and actuator technologies for demanding industries.

SVF products keep quality flowing all over the world in chemical, petro-chemical, power, pulp & paper, water/wastewater, oil & gas, refining, semiconductor, food & beverage, and pharmaceutical facilities and systems.

As an ISO 9001 certified company, we are committed to quality and continuous improvement in all that we do.

Don't see what you need? No problem! Custom designs and products created to meet exact specifications are our specialty. We welcome all inquiries and consultation needs, and guarantee that our team will work diligently to satisfy your requirements.

Product pricing and availability

U.S. and Canada:

Sales@SVF.net

Latin America:

LatinAmerica@SVF.net

¡Llámanos! ¡

Hablamos español!

Worldwide:

International@SVF.net

Technical Support:

Engineering@SVF.net

World Headquarters

SVF Flow Controls

5595 Fresca Drive, La Palma, CA USA 90623

Toll Free: 1.800.783.7836

On the web: www.SVF.net



Valves | Actuators | Controls

