

SC Secondary Containment Module

Secondary Containment Extension

The SVF Secondary Containment “SC” Module offers enhanced protection against fugitive emissions in plant-wide applications. It is designed with two sensing ports to provide a means of meeting EPA-LDAR mandates regarding the detection and repair of emission sources on manual and automated valves.



FEATURES

- ▶ Live Loaded/High Performance-Secondary Containment Packing
- ▶ 1/8” NPT Sniffer Ports (x2)
- ▶ Standard ISO 5211 mounting system for modular attachment and field retrofits
- ▶ Fully enclosed Stem and Packing for insulated piping systems
- ▶ 304 Stainless Steel construction
- ▶ Optional locking device may be field retrofitted

DESCRIPTION

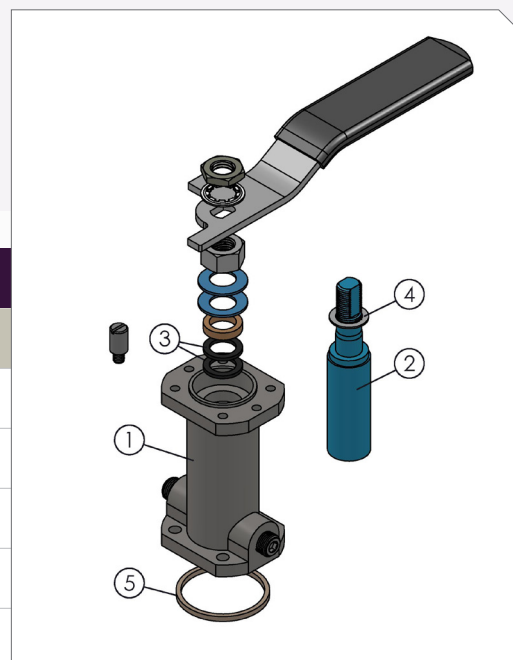
The “SC” uses live-loaded seal technology to address EPA mandates for containment of fluids when piping systems are under thermal cycling, frequent operation or in demanding environments where corrosion may attack traditional stem sealing methods.

The robust design features cast stainless steel construction, ISO-5211 mounting, live-loaded sealing technology, dual sensor ports (this feature provides a method for meeting EPA-LDAR mandates regarding the detection and repair of emission sources) and a selection of manual and automated operating methods.

The “SC” Module is suitable for the following SVF valve types: *All SVF Series “8” Valves*
CleanFLOW™ Series SB7, TSB7

MATERIALS OF CONSTRUCTION

| ITEM | DESCRIPTION | MATERIALS SPECIFICATIONS |
|------|-------------|-------------------------------------|
| 1 | Body | 304 Stainless Steel (ASTM A351 CF8) |
| 2 | Stem | 304 Stainless Steel |
| 3 | Seal | SupraLon™ |
| 4 | Thrust | PEEK |
| 5 | Bonnet Seal | PTFE |



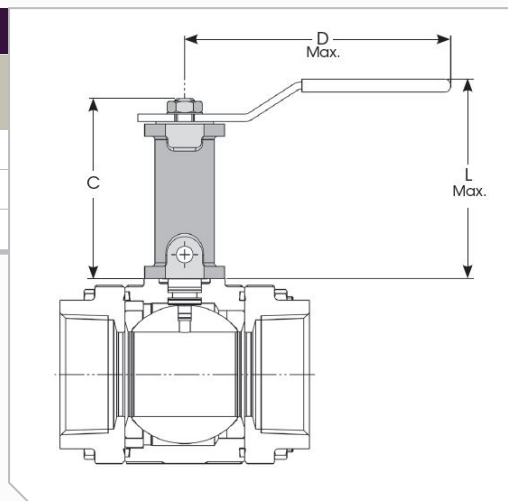
SC Secondary Containment Module

Secondary Containment Extension

The SVF Secondary Containment "SC" Module offers enhanced protection against fugitive emissions in plant-wide applications. It is designed with two sensing ports to provide a means of meeting EPA-LDAR mandates regarding the detection and repair of emission sources on manual and automated valves.

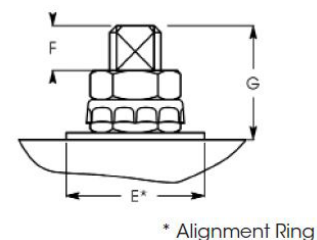
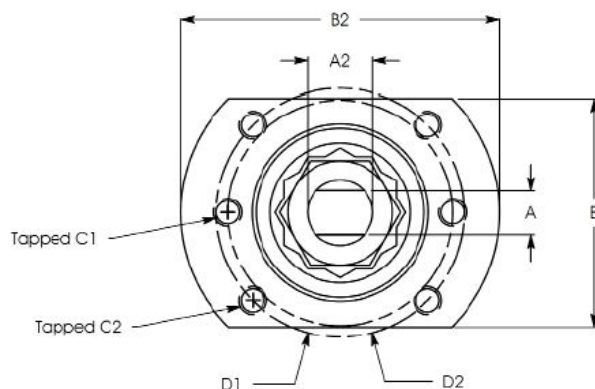
DIMENSION, WEIGHT, TORQUE

| PART # | C | | D | | L | | WEIGHT | | TORQUE | |
|--------|------|-----|-----|-----|------|-----|--------|-----|---------|----|
| | in. | mm | in. | mm | in. | mm | lbs | kg | in.-lbf | Nm |
| SCD05 | 3.76 | 96 | 5 | 127 | 4.40 | 112 | 1 | 0.5 | 18 | 2 |
| SCD10 | 3.94 | 100 | 6 | 152 | 4.40 | 112 | 1 | 0.5 | 27 | 3 |
| SCD15 | 4.44 | 113 | 8 | 203 | 4.70 | 119 | 2 | 0.9 | 32 | 4 |



TOPWORKS

| PART # | A1 | | A2 | | B1 | | B2 | | C1 | C2 | D1 | | D2 | | ISO | E | | F | | G | |
|--------|------|-----|------|------|-----|------|-----|------|------------|------------|------|----|------|----|-----|-----|------|------|------|------|------|
| | in. | mm | in. | mm | in. | mm | in. | mm | | | in. | mm | in. | mm | | in. | mm | in. | mm | in. | mm |
| SCD05 | 0.22 | 5.6 | 0.37 | 9.4 | 1.5 | 38.1 | 1.8 | 45.7 | M5-0.8 (1) | M5-0.8 (4) | 1.42 | 36 | 1.42 | 36 | F03 | 1.0 | 25.4 | 0.15 | 3.8 | 0.52 | 13.2 |
| SCD10 | 0.30 | 7.6 | 0.43 | 10.9 | 1.7 | 43.2 | 2.0 | 50.8 | M5-0.8 (1) | M5-0.8 (4) | 1.65 | 42 | 1.65 | 42 | F04 | 1.2 | 30.5 | 0.31 | 7.9 | 0.70 | 17.8 |
| SCD15 | 0.34 | 8.6 | 0.56 | 14.2 | 1.8 | 45.7 | 2.5 | 63.5 | M6-1.0 (2) | M6-0.8 (1) | 1.85 | 47 | 1.97 | 50 | F05 | 1.4 | 35.6 | 0.44 | 11.2 | 1.17 | 29.7 |



HOW TO ORDER

| PART # | DESCRIPTION |
|--------|--|
| SCD05 | SECONDARY CONTAINMENT DEVICE FOR 1/4" ~ 3/4" SERIES R8, 1/2" SERIES B8, 1/4" ~ 3/4" SERIES SB7 & TSB7 |
| SCD10 | SECONDARY CONTAINMENT DEVICE FOR 1" ~ 1-1/4" SERIES R8, 1" SERIES B8, 1" SERIES SB7 & TSB7 |
| SCD15 | SECONDARY CONTAINMENT DEVICE FOR 1-1/2" ~ 2-1/2" SERIES R8, 1-1/4" ~ 2" SERIES B8, 1-1/2" ~ 2" SERIES SB7 & TSB7 |